

The Hunstanton and Saxon Shore Benefice

Priest-in-Charge & Team Vicar

Welcome

The Hunstanton and Saxon Shore benefice is prayerfully seeking an experienced Priest-in-Charge and Team Vicar to make Christ known and to help us discern our vision to be a church for all, across the town and villages. These coastal parishes are situated within an Area of Outstanding Natural Beauty in northwest Norfolk.

There is an active ministry team of an Assistant Priest, five retired clergy with PTO, and lay led support.

There are two well-appointed clergy houses within the benefice. These two posts are complementary, offering flexibility based on your gifts and experience. Together you will:

- Lead and develop worship that is rooted in tradition yet open to renewal
- Encourage lay leadership and nurture discipleship
- Share in pastoral care across town and villages
- Engage creatively with schools, community groups, and visitors
- Support mission initiatives that reflect the unique opportunities of coastal life

You will be part of a supportive team that values collaboration, prayer, and mutual encouragement.

Our benefice vision

- To actively seek God's will and to grow in faith together.
- To become a stronger, more united benefice better sharing our resources.
- To be prayerful, vibrant and welcoming communities of faith, actively seeking God's will.
- To be outward looking in bearing witness to the Good News that Jesus brought us.
- To make a difference to our communities by harnessing, and growing, the talents we have to serve others.



Priest-in-Charge

The Priest-in-Charge (Team Rector designate) will focus on sustaining and enriching the worshipping life of the benefice, alongside providing compassionate pastoral care across the coastal villages and wider parish network.

Key Responsibilities

- Lead **regular Sunday worship** with the ministry team across the benefice
- Develop **inclusive, prayerful, and liturgically rich services**
- Provide **pastoral care** to parishioners
- Support and train **lay worship leaders, pastoral assistants, and volunteers**
- Maintain strong connections with **village communities and traditions**
- Drive the shared leadership and strategic planning of the benefice, starting at least one new worshipping community within 3 years

Person Specification

- An experienced priest with a heart for **pastoral ministry and spiritual care**
- Comfortable leading both **traditional and more modern styles of worship**
- Strong organisational skills to manage **multi-parish responsibilities**
- A collaborative approach to ministry and team life
- Empathy and ability to **minister across all ages and backgrounds**

Shared Expectations for Both Roles

- Commitment to **team ministry and mutual support**
- Work together with the PCCs in shared commitment to safeguarding and promoting the welfare of children, young people and vulnerable adults
- Participation in benefice-wide planning, prayer, and vision setting
- Flexibility to serve across **Hunstanton and adjacent coastal villages**
- Willingness to engage with the unique opportunities and challenges of a **coastal, rural benefice**
- Uphold the values and mission of the Church of England

Opportunity

These roles offer a unique opportunity to serve in a **beautiful coastal setting**, combining traditional parish ministry with creative mission opportunities shaped by tourism, community life, and changing demographics.

Team Vicar

The Team Vicar will play a key role in developing vibrant, outward-facing ministry mainly across Hunstanton and Old Hunstanton, but will have involvement with the Saxon Shore coastal villages. This role focuses on building relationships, growing discipleship, and engaging with residents, visitors, and seasonal communities.

Key Responsibilities

- Lead and develop **mission initiatives** tailored to coastal and tourism contexts, starting at least one new worshipping community within 3 years.
- Build strong links with **local schools, churches, community groups, and businesses**, as well as undertaking **civic responsibilities**.
- Pioneer **creative and accessible forms of worship**, especially for those new to church
- Support **pastoral care** across the benefice, particularly in Hunstanton town
- Collaborate with lay leaders to encourage **discipleship and small group growth**
- Engage with the **seasonal influx of visitors**, offering welcoming and relevant ministry
- Conduct occasional offices, building connections with families

Person Specification

- A priest with a passion for **mission and evangelism**
- Strong interpersonal and communication skills
- Experience (or enthusiasm) for **fresh expressions of church**
- Ability to work collaboratively in a **team ministry context**
- Sensitivity to both **rural and seaside community dynamics**

Shared Expectations for Both Roles

- Commitment to **team ministry and mutual support**
- Work together with the PCCs in shared commitment to safeguarding and promoting the welfare of children, young people and vulnerable adults
- Participation in benefice-wide planning, prayer, and vision setting
- Flexibility to serve across **Hunstanton and adjacent coastal villages**
- Willingness to engage with the unique opportunities and challenges of a **coastal, rural benefice**
- Uphold the values and mission of the Church of England

Opportunity

These roles offer a unique opportunity to serve in a **beautiful coastal setting**, combining traditional parish ministry with creative mission opportunities shaped by tourism, community life, and changing demographics.

What we can offer you

Clergy/administrative assistance

- Our ministry team consists of an Assistant Priest, one Authorised Worship Assistant, five retired clergy, and churchwardens who lead services when the need arises.
- The Revd Dr James Monro was ordained in 2012 and served his title in the then Saxon Shore Benefice, before becoming assistant priest to the Hunstanton St Edmund's and Ringstead Benefice in 2016, and continued in post when the two benefices were combined in 2019. He is self-supporting, having previously worked in hospital medicine and then for 22 years as a general practitioner in Somerset. He is no longer in medical practice, and lives just outside the benefice in Docking.
- We have a benefice administrator who works from home, and currently performs limited tasks across the benefice such as co-ordinating the monthly service rota and ensuring that it is sent to the various local newsletters for publishing.
- We expect to pay our new priests expenses on a monthly basis.

PCC Support

- The Churchwardens and PCCs will give their full support to our new priests.
- PCC's meet on a regular basis across the benefice. We look forward to working out a manageable pattern of meetings with our new priests. Where meetings are lay led the PCC would report back to the new priest and provide a copy of the Minutes.

Clergy Wellbeing

- We are fully committed to the wellbeing of our clergy and several of the churches have adopted the Covenant for Clergy Care and Wellbeing. This is reviewed annually.
- Days off, holidays, training and retreats will be encouraged and we would hope to plan the time for these together.

Safeguarding

- The parishes are committed to the safeguarding of children, young people and vulnerable adults and have adopted the Church of England policies and best practices. Parish Safeguarding Officers are in place across the benefice.

Clergy Housing

There are two well appointed clergy houses within the benefice in Brancaster and Hunstanton. The house in Brancaster is a beautiful setting for ministry across the villages. The house in Hunstanton is ideally situated for ministry within the town of Hunstanton.

Brancaster

The modern vicarage is located on Broad Lane in Brancaster adjacent to the church. The downstairs accommodation comprises a study, accessed without entering the main house, a parquet floored sitting room with an open fire, dining room, kitchen with utility room and pantry. There is also a large downstairs shower room. Upstairs there are four bedrooms (three of which have built in wardrobes), a bathroom and separate toilet, as well as ample cupboard space and a large loft. There is a garage and good space for parking. The garden extends around three sides of the house, and is fully enclosed at the rear of the property.

Hunstanton

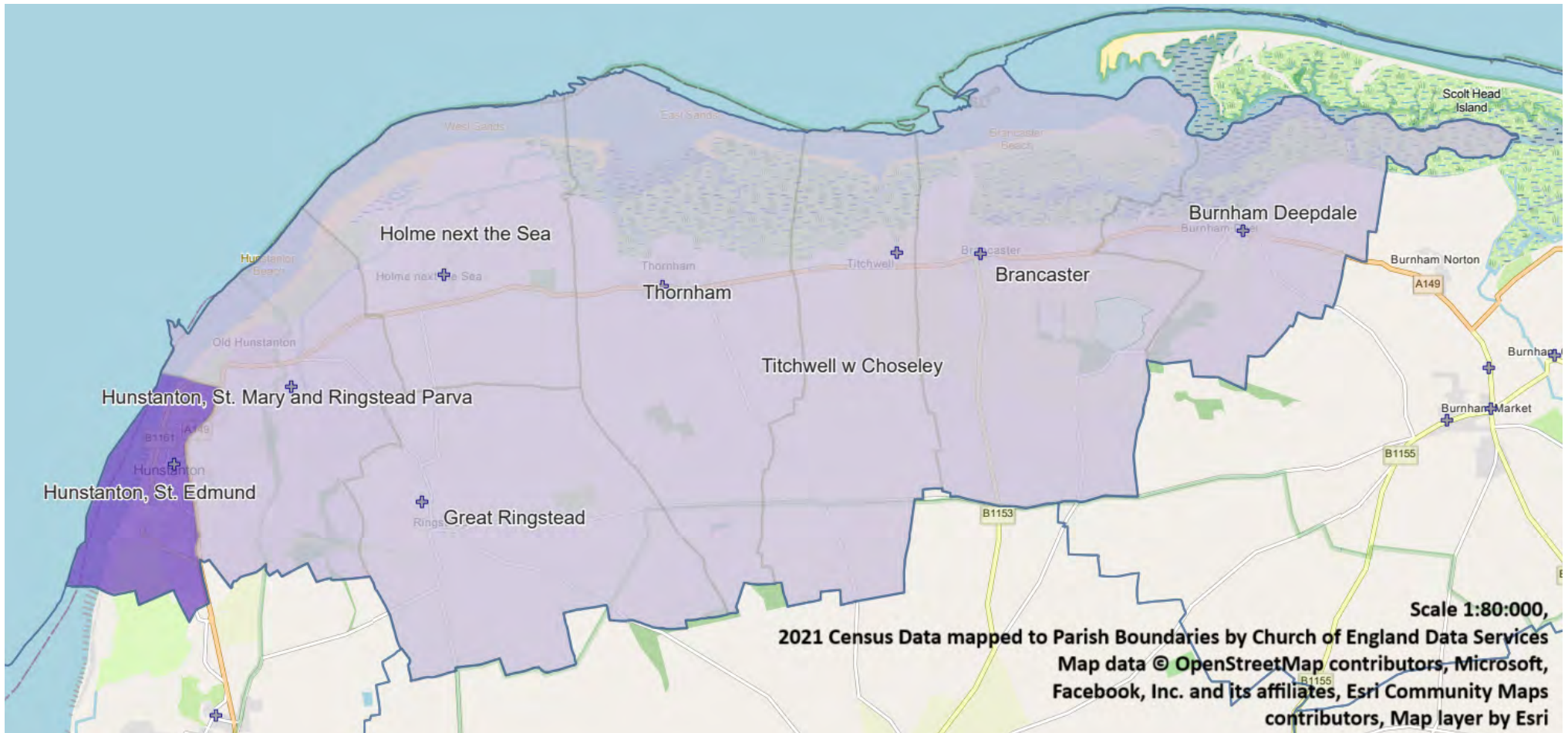
The Diocese has acquired a brand new energy efficient house on St Edmund's Park in the heart of Hunstanton which will become the new Rectory. This new energy efficient five-bedroom home benefits from a room with ensuite facilities above the double garage which could be used as a meeting room/library/study in addition to a smaller study. The house is light and airy with a large lounge and kitchen with open plan dining. Two of the bedrooms have fitted wardrobes, and the main bedroom has its own en-suite. The house is within easy walking distance of St Mary's church, St Edmund's church, the seafront and the shops.



Where are we

Our place in the Diocese

The Hunstanton & Saxon Shore Group of Churches is located in the Heacham and Rising Deanery within the Diocese of Norwich and comprises the parishes of Hunstanton, Old Hunstanton with Ringstead Parva, Ringstead, Holme-next-the-Sea, Thornham, Titchwell with Choseley, Brancaster and Burnham Deepdale.



Our group of eight churches is situated in an Area of Outstanding Natural Beauty in North West Norfolk.

This part of the Norfolk coastline has so much to offer that visitors come from all parts of the country to enjoy it. The Norfolk Coastal Path and Peddars Way are popular with walkers and link all our parishes. There is something for everyone here from bird watching to water sports, golf courses and fine dining.

The largest centre of population, Hunstanton, is the only west facing resort on the east coast. It is a lively seaside town in summer with a theatre, fun fair, and pitch and putt course. Its famous striped cliffs provide our own Jurassic coastline. There is a regular bus service, which runs through all of the parishes, with the exception of Ringstead, to Wells-next-the-Sea and to King's Lynn where a train connection takes you to London King's Cross in under two hours. Four buses an hour run from Hunstanton to King's Lynn. Direct train connections can be made at Ely station to numerous UK locations. It is a good and interesting part of the world in which to live. Most of the population of the benefice are to be found in the town of Hunstanton (c 4,500).

The combined permanent population of the other parishes is 1,553. All parishes have pockets of social housing abutting the properties of the more affluent. Changes in agricultural practices have meant many, especially younger people, leaving in the last few decades to find work elsewhere. Property prices have boomed in recent years, and with the loss of social housing few younger local people can afford to live in the villages. The recent cost of living crisis has highlighted the issue of poverty in this area. Incoming retirees have in turn markedly increased the average age of the population. Many properties, including a significant number of new-builds, have become second homes or holiday lets, and this should be viewed as an opportunity for outreach.



Our Parishes

All our churches are focal points in the communities and are well maintained.

The churches within our benefice date from the pre-conquest through to the Victorian period. All churches in the benefice are focal points in their communities and are well maintained. Six Sunday services are held every week, except on the fifth Sunday in the month when there is a Benefice service. Details of Parish Statistics can be found below. In addition the following services take place across the benefice.

Seasonal Services: lifeboat services, harvest, sea, and pet services.

Civic Services

Prior to the vacancy, Morning Prayer was said daily in the churches on a weekly rotation. Holy Communion services are conducted in care homes. Evening Prayer is held on Zoom on Sundays from October through to July. This service is prepared by lay people and can be either lay led, or led by one of the retired clergy.



Fund-raising

We encourage the use of our churches for recitals and concerts including from The Shanty Men of Sheringham, and the Staithe Singers of Burnham Overy Staithe. All of our churches are open every day to welcome visitors. Parish fund-raising activities, such as "Open Gardens", Flower Festivals and Fayres are community events. The Benefice contributes its Parish Share, which is apportioned between the parishes, to the diocese.

Small congregations are energetically sustaining Church life during the vacancy, and all congregations are boosted by second-home owners and visitors particularly in the summer and at festivals.

St Mary's Old Hunstanton

Services are held every Sunday with a current average of approximately 25. This number swells greatly at Christmas, Easter and Remembrance Sunday.

The adjacent church hall is well equipped with facilities and hosts a weekly Warm Space café, attended by people from across the benefice for company as well as support from the Community Support Worker from the adjacent foodbank. It is hired out for various social events and classes.

The Church has close links with the Town Council and is actively involved with Hunstanton Area Churches Together. The church building was constructed in the early 1860s when work began on the town of New Hunstanton. It is therefore fortunate to be in the centre of town within a large green space.

The church has close links with the Emergency Services with an annual Carol Service, in recent years, taking place at the RNLI station on the beach. Glebe House Preparatory School traditionally hold their Leavers' Service and Carol Service at the church.

The church is the focal point of the Old Hunstanton Flower Festival held in July.

The church is open to the public every day and ALL ARE WELCOME. The church dates back to the 14th century and many features remain today, including the impressive Norman font.

In Victorian times various "improvements" were carried out. The Le Strange family, responsible for much of the development of Hunstanton Town, and who occupied Hunstanton Hall, were patrons of the church and tombstones and plaques remain.

The church is particularly proud of its Rood Screen, experts regarding it as particularly fine, and this was restored/renovated in 2022.

Hunstanton Town

Hunstanton, in common with many other coastal communities is one of the more deprived in the country, being on the 9th centile of the Church Urban Fund index of deprivation.

A significant proportion of the children attending state schools live in a large area of social housing situated out of the sight of the rest of the town. The population there is far less stable than the national average, as employment opportunities are limited locally. Substance abuse is a problem in the town.

Hunstanton has a homeless hostel and a women's refuge.

There are three complexes of McCarthy and Stone retirement flats and five care homes.

There are several developments of new homes, which also offer an opportunity for outreach. A large number of other properties are second homes or holiday lets.

St Edmund's Hunstanton

Services are held every Sunday (except the fifth Sunday of the month when there is one) with a current average congregation of approximately 20.

St Edmund's church currently has a loyal but mainly elderly congregation of 18-25. The churchmanship is Anglo Catholic, though somewhat less so recently.

We are open to different styles of worship. There are services every Sunday morning with several long-standing and loyal members of the congregation arriving with their carers from a nearby nursing home.

We are regularly complimented on the welcome received at the church. The church is open daily and many visitors and members of the congregation pass through for times of quiet prayer.

St Andrew's Ringstead

During the vacancy our small, but active, congregation continue to meet for worship each Sunday and on Thursday mornings twice a month. Our numbers swell for the major festivals when we welcome many second home owners and visitors. As part of the Saxon Shore we join together for team services and support events across the benefice. Annual celebrations in Ringstead include an outdoor service for St Peter's Day in front of the ruined round tower. The village community turn out in June to help raise funds for the church on Ringstead Open Gardens, and in early November to tidy the area around the War Memorial ready for Remembrance Sunday. Volunteers also help with churchyard maintenance throughout the year. The "Friends of St Andrew's" work hard to finance the maintenance of the church building and to keep its equipment up to date and in working order, recently funding restorations to the bell and the clock, but repairs to our church building continue to be a financial challenge. We look forward to welcoming our new spiritual leader to the Saxon Shore to unite the benefice and to grow the kingdom of God.

All Saints Thornham

The regular congregation of 8 to 15 is boosted at Easter when the church is usually full with second home owners and visitors. The church lies in the centre of the village and is Grade I listed dating back to the 13th century.

It is light and airy in a very pretty setting – consequently it is sought after for weddings. The church has a welcome area with comfortable seating at the back of church with tea and coffee making facilities. A kitchen and toilet add to the facilities for the congregation and visitors.

The churchyard is large, but well maintained with 8 allotments at the side of the church and a community garden for use by both visitors and villagers. St Mary's.

St Mary the Virgin Holme-next-the-Sea

The church is close to a stunning beach and surrounded by nature reserves and farmland.

Attendees, averaging 21 come from the local, mainly retired population, second home owners and holiday makers.

There is an active PCC, who with other parishioners regularly participate in services.

A family fun event is held in the village every Easter Monday and centres on the church.

The annual Open Gardens in July and the church Fete in August cement the sense of community in the village as well as bringing many people from the surrounding area.

The church is supported by The Help Holme Church Group whose members enthusiastically fundraise for the fabric of the church.

It is 12th century in origin and is a well maintained Grade 1 listed building. The Georgian nave and chancel are unadorned and simple.

The church has 5 bells. A wonderful team of flower arrangers keep the church beautifully decorated especially at festival times.

A toilet and small kitchenette enable refreshments to be offered after services and at special events.

Our finances are currently secure. Major restoration work on the tower is scheduled to take place in 2026.

St Mary the Virgin Brancaster

The church community is currently undergoing a challenging time with a very small congregation at present. However, there is potential for growth as there are large congregations at Christmas and Easter, the latter being boosted by visitors and second home owners.

As with all the church buildings in the benefice, there is a considerable throughput of tourists, either sightseers or those seeking a time of quiet prayer, many of whom also donate through the card reader. There is a welcome area with self-service tea and coffee making facilities that seems to be much appreciated.

The church community actively supports regular concerts in the church building, as well as a weekly good-friends' community café in the spacious and new-refurbished village hall. The church building is mainly 14th century with a large 15th century tower. Many of the building stones appear to have come from the nearby Roman fort of Branodunum. The fabric of the building is well maintained with the help of a very active Friends of Brancaster Church charity.

St Mary Titchwell with Choseley

Titchwell is the smallest parish in the benefice and consists of some 50 houses, the majority being built as tied cottages for an agricultural estate at the end of the nineteenth century.

The village has a strong sense of community in spite of many properties having sold for the holiday market. The church building has been a place of prayer for over a thousand years and many sense its special atmosphere, describing it as a “thin place”. It is for this reason that a contemplative group, Stillness on the Saxon Shore, was established there some ten years ago. The group continues to thrive and meets every Friday afternoon.

For many years, the parish has hosted the benefice Book of Common Prayer Communion Service first thing every other Sunday morning; remarkably this congregation has grown in recent years. A Common Worship Communion service was started every Sunday morning two years ago, and has a gathered congregation that has grown both in numbers and closeness.

The small church struggles to accommodate the large congregation for the annual Christingle service on Christmas Eve, and regularly hosts wedding services for those holding their receptions at the two hotels in the village.

The church community has a close working link with the secular Titchwell parish meeting and regularly hosts community meals in a marquee on the village green.

Even a cursory glance at the building will reveal its antiquity. The base of the tower may well be 10th century while the newer top is still obviously Saxon. The rest of the building has been worked on in almost every preceding century as evidenced by blocked up Norman windows through to a porch rebuilt in Edwardian times.

The fabric officer is actively working on plans to secure the structure into the next century as well as re-ordering the interior so that it can also serve as a suitable public space for the village.

The PCC is currently forming a Friends of Titchwell Church to raise funds for the project.

St Mary's Burnham Deepdale

Our annual Sea Service marks the connection of the village with the harbour and its fishing and recreational activities. We are often complimented on the warmth of our welcome to worshippers and to those who come to find peace and quiet, or to just pop in for a visit. We have a churchyard which is still open. Currently we have three services per month – two communion services following Common Worship and a well-attended informal Family Service, which we hope to grow. The church serves the joint villages of Burnham Deepdale and Brancaster Staithe (not to be confused with Brancaster). It has been a place of worship since the 11th century as witnessed by its Saxon round tower. Other notable features include its Norman square font and its collection of medieval glass.

Sundays with us

Please see the service rota below for a typical month.

CW – Common Worship / **BCP** – Book of Common Prayer / **HC** – Service of Holy Communion / **MP** – service of Morning Prayer (no bread and wine)

EP – Service of Choral Evensong BCP / **Family** – Shorter service with lighting of candles (no bread and wine)

Date	Church	Time	Service	Liturgy
Sunday 3rd May Fifth Sunday of Easter	Holme	9.00 am	HC	BCP
	Ringstead	9.00 am	HC	CW
	Titchwell	10.30am	HC	CW
	Old Hunstanton	10.45 am	HC	CW
	Hunstanton	10.45 am	MP	CW
	Brancaster	10.45 am	HC said	CW
Sunday 10th May Sixth Sunday of Easter	Titchwell	8.30 am	HC	BCP
	Thornham	9.00 am	MP	CW
	Burnham Deepdale	9.00 am	HC	CW
	Ringstead	9.00 am	HC	CW
	Old Hunstanton	10.45 am	HC	CW
	Hunstanton	10.45 am	HC	CW
Thursday 14th May Ascension Day	Ringstead	10.00 am	HC	

Stillness on the Saxon Shore
Every Friday at 2.45pm at Titchwell Church

Date	Church	Time	Service	Liturgy
Sunday 17th May Seventh Sunday of Easter	Holme-next-the-Sea	9.00 am	HC	CW
	Ringstead	9.00 am	HC	CW
	Burnham Deepdale	10.15 am	Family	CW
	Titchwell	10.30 am	HC	CW
	Old Hunstanton	10.45 am	MP	CW
	Hunstanton	10.45 am	HC	CW
Sunday 24th May Pentecost	Titchwell	8.30 am	HC	BCP
	Thornham	9.00 am	HC	CW
	Burnham Deepdale	9.00 am	HC	CW
	Ringstead	9.00 am	MP	CW
	Hunstanton	10.45 am	HC	CW
	Old Hunstanton	10.45 am	HC	CW
Thursday 28th May Midweek Communion	Ringstead	10.00 am	HC	
Sunday 31st May Trinity Sunday	Hunstanton	10.00 am	Benefice Service	CW

Making Space Cafe 10am – 12noon
Wednesdays each week at St Edmund's Church hall. An official 'Warm Space'

Other regular events

Name of Parish	Average Sunday Attendance	Number on Electoral Roll	Number of Weddings	Number of Baptisms	Number of Funerals	Parish Share Request 2025 £	Parish Share Paid 2025 £	Is there a Churchyard and is it open?
St Edmund's Hunstanton	18	27	0	2	4	£21,124	£8,000	No
St Mary's Old Hunstanton	24	43	0	0	0	£24,908	£16,507	Yes and Yes
St Andrew's Ringstead	9	14	0	0	1	£13,864	£9,188	Yes and Yes
St Mary the Virgin Holme-next-the-Sea	20	20	1	0	0	£11,956	£8,417	Yes and Yes
All Saints Thornham	12	13	4	3	1	£9,871	£9,871	Yes and Yes
St Mary's Titchwell	26	25	2	1	0	£6,042	£6,042	Yes and Yes
St Mary the Virgin Brancaster**	10	25	1	1	5	£6,266	£2,955	Yes and Yes
St Mary's Burnham Deepdale	18	35	3	3	2	£16,592	£16,592	Yes and Yes
	137	237	11	10	13	£110,623	£77,571	

**All data is 2025, aside from the statistics for Brancaster, which is 2022 data.

Our Schools

Smithdon High School, Hunstanton

Has 581 pupils aged 11 to 16 and is part of the West Norfolk Academies Trust. OFSTED graded as "Good" following its 2023 inspection. Pupils are mainly drawn from larger villages to the south and east of the benefice as well as from the town of Hunstanton.

Hunstanton Primary School

Is a single form entry infant & junior school with seven classes and a roll of 172. The number of children on Pupil Premium is 38% and Special Educational Needs 33%, both considerably above the national average. Clergy are welcomed to take assemblies and our Assistant Priest has been a governor with oversight of religious education and pupil wellbeing for the past four years. St Edmund's, Hunstanton is pleased to host the school's Carol Service every year.

Glebe House School Hunstanton

Is an independent nursery and preparatory school which has a combined roll of 116. Boarding is available from age 7, but, as there is no weekend provision, the pupils are all quite local. St Mary's, Old Hunstanton hosts the school's Carol Service and Leavers' Service at the end of the summer term, the school being within the parish. Incumbents have always had close links with the school.

Incumbents have always had close links with the school. Some children from the parishes attend secondary schools in Wells-next the-Sea (11-16), Fakenham (11-18) and King's Lynn (11-18) & the College of West Anglia in King's Lynn (post 16).



During the week

- There is a mid-week communion service in Ringstead twice a month.
- Innovative lay led worship 'Stillness on the Saxon Shore' is held at Titchwell every Friday.
- "Making Space": meets every Wednesday between 10am and 12noon in St Edmund's church hall. This church led initiative offers a safe and welcoming environment for people from the whole community to meet and chat. All are welcome. Attendance numbers vary from week to week, but there are usually around 20 to 30 people from the local church congregations and from the wider communities. Visitors to the town often drop in particularly during the summer months.
- In Brancaster Village Hall every Wednesday morning a group of villagers meet for coffee and a chat, which has been a regular event for many years.
- Clergy are invited to lead the prayers at Hunstanton Town Council meetings and, from time to time, facilitate thanksgiving for the local emergency services.
- The Hunstanton and District Foodbank (please see further details below) is based in St Edmund's Church Hall and is supported by volunteers and donations from our churches.
- Thornham churchyard benefits from 8 well used allotments and a community garden for use by locals and visitors.
- Deepdale church offers a series of sociable Lent lunches.
- Clergy are welcomed at all the numerous social events in the town and the village halls, including film evenings, relays of opera and plays. On such occasions contacts can lead to requests to take baptisms, weddings and funerals and build up important contacts with residents and visitors.
- Hunstanton and Area Churches Together has regular services and faith meals, a walk of witness, summer praise on The Green and a Christmas event in Hunstanton Town Hall.
- There are two monthly parish magazines, Norfolk Link and Parish News, to which clergy are invited to contribute.



Hunstanton and District Foodbank

Hunstanton Food Bank was founded eleven years ago to meet a growing local need, and is very much part of the ministry of St Edmund's church being based in part of the church hall. The board of trustees consists of members with faith and no faith from within the benefice. Our assistant priest was chair of trustees from its inception until 2024.

The food bank is a franchise of Trussell and performs an important but discrete evangelistic ministry, well supported by the other local churches and serving an area wider than the benefice itself. The amount of food distributed and people helped has risen year on year. The food bank employs a Community Support worker in collaboration with the British Red Cross and a three year grant from Trussell. This person works closely with food bank clients, local schools and the Helping Hands Community Café.

Helpful links

Diocese of Norwich

www.dioceseofnorwich.org

Church of England

www.churchofengland.org

Living and working in Norfolk – Norfolk County Council

[www.norfolk.gov.uk/jobs-training-and-volunteering/
living- and-working-in-norfolk](http://www.norfolk.gov.uk/jobs-training-and-volunteering/living-and-working-in-norfolk)

Thank you

Thank you for reading this benefice profile.
We look forward to hearing from you.





Diocese of Norwich

Diocesan House, 109 Dereham Road, Easton, Norwich NR9 5ES

www.dioceseofnorwich.org   

Registered Charity No: 249318