



ASSOCIATE MINISTER PROFILE

FOUNTAIN OF LIFE

NETWORK CHURCH



Thank you for your interest in this post. We hope this information will help you in your discernment about whether God is calling you to this key role of Associate Minister here.

INTRODUCTION

BELONG | BELIEVE | BECOME

CHURCH NAME

Fountain of Life
Network Church

DEANERY

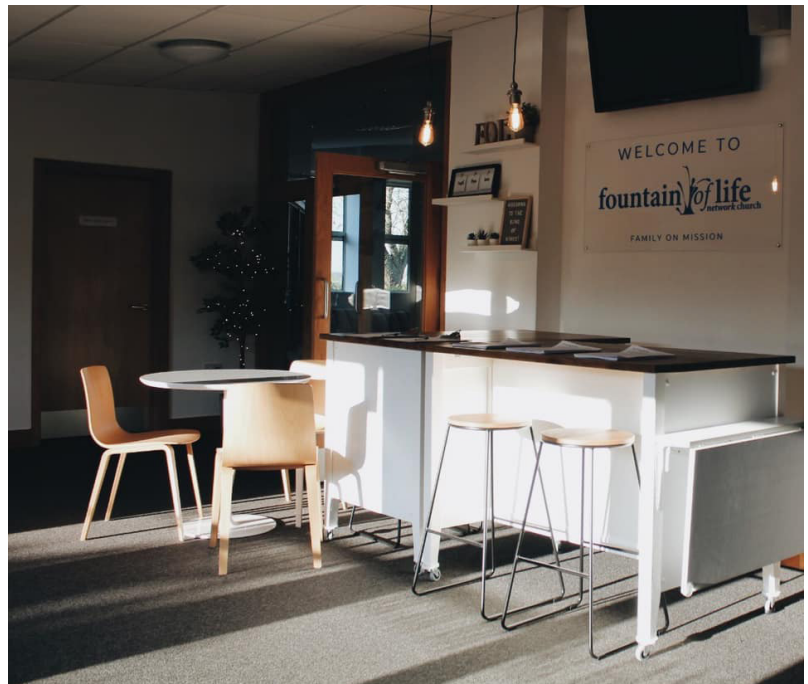
Breckland

LOCATION

Mid Norfolk

TYPE OF AREA

The Fountain of Life is a rural Network church with 2 locations. Ashill is an Extra-Parochial Place (EPP) and Swaffham has a Bishop's Mission Order (BMO) that serves the region of Mid-Norfolk located approximately between Swaffham, Watton and Dereham.



SENIOR MINISTER

The Rev'd Paul Wilkinson
07926 916766
paul.wilkinson@folchurch.co.uk



folchurch.co.uk



paul.wilkinson@
folchurch.co.uk



@folchurchnorfolk



@folchurchnorfolk



Fountain of Life Network
Church, Ashill



FOUNTAIN OF LIFE

NETWORK CHURCH

OUR SETTING AND CONTEXT



THEOLOGICAL FORMATION

Charismatic evangelical

CONTEXT AND LOCATION

The Fountain of Life is located approximately ½ mile outside the village of Ashill on the Swaffham Road but the majority of the congregation comes from within a 15 mile radius.

CHURCH ADDRESSES

Fountain of Life Church | Ashill

The Well Christian Centre
Swaffham Road
Ashill, Norfolk IP25 7BT

Fountain of Life Church | Swaffham

The Barn, Sporle Road,
Swaffham PE37 7HL

CHURCH OFFICE

01760 441 902
admin@folchurch.co.uk

SENIOR MINISTER

The Rev'd Paul Wilkinson
10 Church Street, Ashill, Norfolk IP25 7AW

T 07926 916766

E paul.wilkinson@folchurch.co.uk

Ordained 2011
Appointed 2019



folchurch.co.uk



paul.wilkinson@
folchurch.co.uk



@folchurchnorfolk



@folchurchnorfolk



Fountain of Life Network
Church, Ashill



ASSOCIATE MINISTER | THE ROLE

The Fountain of Life Church is seeking a full-time Associate Minister with a vibrant, active faith which is lived out with conviction. An ordained priest within the Church of England, or a Church in communion with it.

We are looking for someone with a genuine passion for mission and for ministry among children, young people, and families. This is a key leadership role, designed to support and strengthen the continued growth of our church across both locations, helping us to “Grow Younger”, deepen discipleship, and broaden our reach into the wider community for the long term.

SPECIFIC

- Work with the Senior Minister and staff to continually develop the vision for the churches.
- Line manage the children, youth and family's team – staff and volunteers.
- Lead, develop and manage the kid's church team.
- Recruit and train volunteers for the kid's church team.
- Lead on curriculum design and implementation for kid's church.
- Facilitate family worship events.
- Facilitate family celebration and outreach events.
- Equip parents in parenting for faith through resourcing and training.
- Produce, develop and review operational policies and procedures.
- Lead/Preach/Minister at worship services and occasional offices alongside other staff and voluntary leaders.
- Support the Pastoral Team, Homegroups, Prayer Ministry, Welcome Team and the Visiting Team.
- Contribute to Sunday afternoon/evening services (Closer, Higher, Wider and Deeper).
- Assist and develop other ministries as opportunities arise.
- Contribute to the FoL church publications including FoL News, the Prayer Diary and Bible Notes.
- Lead or assist with other duties as required by the Senior Minister.
- Follow FoL Church's Safeguarding and associated Policies and ensure completion of safeguarding training as required.
- Follow FoL Church's Health and Safety Policy and complete risk assessments.
- Maintain and be responsible for overseeing the Children, Youth and Families Ministry budgets.





ASSOCIATE MINISTER | PERSON PROFILE

As an Associate Minister at the Fountain of Life Church you will be:

- A strong leader with an ability to inspire and lead others
- A person with a heart for reaching children, young people and families.
- A person keen to be immersed in a culture of mission and outreach.
- A person who has a vision and passion for pioneering church in ways which take the Gospel into the community.
- A person who is at home working with Schools
- A person who is committed to building teams and operating as part of a team, not a lone ranger.
- Someone who is able to make and inspire disciples
- A creative person who is prepared to take risks and imagine how things could be different from the status quo.
- A person with a good theological grounding in mission.
- A person comfortable with a charismatic/evangelical approach to ministry.
- Someone who is prepared to work under the power and prompting of the Holy Spirit.
- Someone who is able to be flexible enough to work under direction but able to work on their own initiative at appropriate times.
- Someone who is able to maintain spiritual health and emotional balance amidst a fast-paced ministry.
- Someone who is committed to the long haul not just the short impact.

DESIRABLE ATTRIBUTES:

- A person with a New Wine background or similar
- A person with good computer and administrative skills
- Someone with basic knowledge of accounting and finance
- A driving licence and access to a car





WHAT WE OFFER

We are committed to welcoming our new minister with warmth, wholehearted support, and ongoing prayer for both their ministry and their well-being.

Joining us, you can expect:

- A large, enthusiastic team of staff and volunteers deeply engaged in worship, outreach, and community events
- A strong team of Authorised Worship Assistants and retired clergy (with PTO) who contribute faithfully to services and church life
- A committed board of Trustees (equivalent to a PCC), along with two Bishop's Trustees (equivalent to Churchwardens), meeting six times a year with a shared sense of purpose and direction
- Modern, well-maintained, well-equipped buildings that support vibrant ministry
- A good-quality 3–4 bedroom home near the church in Ashill or a financial allowance if you prefer to live in your own property
- A strong and proactive Safeguarding Team
- A healthy culture that values your privacy, rest, renewal, and work–life balance
- Two lively, outward-focused churches where every person's gifts and contributions are genuinely valued

ACCOMMODATION

The post comes with a modern, well-presented three-bedroom bungalow featuring two bathrooms, a study, and a generous kitchen. The property is suitable for conversion into a four-bedroom home if required. It sits next to the church office, where a meeting room is available to ensure your privacy is fully respected.





FOUNTAIN OF LIFE

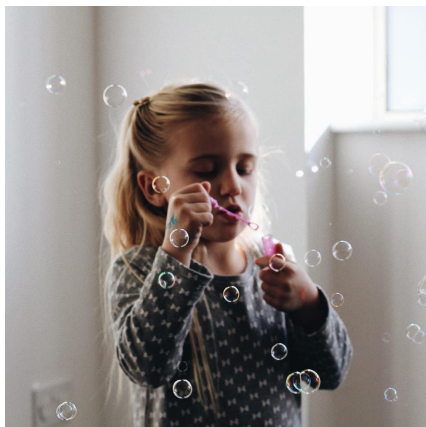
NETWORK CHURCH

VISION AND VALUES

OUR ASPIRATIONS

We hope that this church will be:

- A place where the presence of God is felt and experienced
- A place where new people are regularly coming to faith in Jesus
- A place where new believers grow as disciples in following Jesus
- A place where the wounded are made whole
- A place where every person's gifts and talents are used to the glory of God
- A place where people make friends easily
- A place where potential in people is realised
- A place where each person is equally valued
- A place which is fun to belong to
- A place which has a reputation for excellence in all that it does
- A place which reaches out to the wider community and embraces the poor



folchurch.co.uk



paul.wilkinson@folchurch.co.uk



[@folchurchnorfolk](https://www.facebook.com/folchurchnorfolk)



[@folchurchnorfolk](https://www.instagram.com/folchurchnorfolk)



Fountain of Life Network Church, Ashill



FOUNTAIN OF LIFE

NETWORK CHURCH

OUR AIMS

We seek to:

- Consistently preach the full picture of God as revealed in the Bible
- Deliver relevant teaching across the ages
- Provide worship which encourages and enables us to meet with God
- Create space for God to move by the power of His Spirit
- Provide opportunities for people to turn to Christ
- Enable each person to experience healing and wholeness
- Grow a loving and fun-filled community committed to God and one another
- Train and equip people to realise their full potential in Christ
- Explore creatively ways of telling others the good news of Jesus
- Serve our local community and meet practical needs.

OUR VALUES

We value:

- The person of God, the Father, the Son and the Holy Spirit
- Each individual uniquely created in the image of God
- The authority of the Word of God and the whole counsel of God as revealed in the Bible
- The renewing power of the Holy Spirit.
- The family of God as a place in which we become whole
- Worship in releasing encounter with God
- Every member released in ministry
- The capacity of all ages to meet with God





FOUNTAIN OF LIFE

NETWORK CHURCH



OUR VISION AND PRIORITIES

The things that excite us most as a church are:

- The pursuit of missional opportunities
- The increasing opportunities to extend the Kingdom of God as a resource church for the Diocese.
- The development and operation of ministries offering care and support to the communities around us
- The support FOL offers to other churches and church leaders to develop their own ministries and church life.

We are constantly striving:

- To develop our missional communities further and to see them establish on foundations that build for the future.
- To establish a new plant in a strategic location and to work towards ensuring long term sustainability.
- To explore and establish new expressions of church
- To work closely with the Diocese supporting its work and mission wherever possible
- To see the staff team and volunteers grow and develop in their ministries and in their own walk with God.
- To see the people we minister to disciplined and be equipped to engage with others in outreach.
- To see the pastoral ministries FOL operates develop stronger links with the communities they serve and with other churches in the region.
- To see the transforming power of Christ at work in our region.





FOUNTAIN OF LIFE

NETWORK CHURCH



FoL has hosted Leader's lunches, weekend conferences, teaching days and the Diocesan Church Planting and Revitalisation Training course. That prompted a re-examination of FoL's situation and the realisation that as a single entity FoL's growth was restricted. That in turn led to the exploration of new church growth opportunities.

THE CHURCH

The Fountain of Life (FoL) serves a variety of communities across every age group and with a variety of interests. FoL is an Extra Parochial Place (EPP) and more recently a Bishop's Mission Order (BMO) in Swaffham which describes itself as a missionary congregation whose focus is on taking the gospel to those who haven't yet encountered it. FoL is a New Wine Church that works with around 20 schools through Kidz Klub, runs a range of missional outreach initiatives, hosts leadership and training days, Alpha courses, training conferences, 17 home groups, a Christians Against Poverty (CAP) Debt Centre and CAP Money training programme.





FOUNTAIN OF LIFE

NETWORK CHURCH

WE LOVE:

- Investing in personal discipleship growth through life groups/home groups.
- Delivering teaching and training to equip and release.
- Encouraging and envisioning each person to encounter the presence of God for themselves.
- Supporting schools with assemblies, lunchtime clubs, mentoring with a new partnership with the Transforming Lives for Good charity growing as a ministry in several schools.
- Engaging with children and parents outside of the faith community through pre-school, Kidz Klub, Who Let the Dads Out, Family Night and other family focused events.
- Pioneering new forms of outreach and networking amongst all age groups.

FOL church also runs First Steps Pre-School, and 2 weekly parent and toddler groups called Noah's Ark. The extensive Kidz Klub and children's work has forged strong connections with both the Diocese of Norwich where key staff work with the Children Youth and Families team supporting events and and New Wine where the team ran Boulder Gang (10 - 11 year olds) for 5 years. The Youth team have enthusiastically engaged in mission and ran a trip to Albania with YWAM in 2019, and continue to engage in regular outreach across the region. The church also runs 2 monthly gatherings for the elderly which gathers the isolated and lonely for fellowship and a number of social gatherings and events for other age groups.

In addition, there are a variety of different services and activities which allow for worship in a variety of forms and settings. During the Covid 19 pandemic FoL developed an online ministry that it continued after the lockdown restrictions were lifted. This is in recognition of the fact that new connections were formed with people who don't normally attend church. The digital world has opened up a new field of ministry that we believe presents us with great opportunities.



folchurch.co.uk



paul.wilkinson@folchurch.co.uk



[@folchurchnorfolk](https://www.facebook.com/folchurchnorfolk)



[@folchurchnorfolk](https://www.instagram.com/folchurchnorfolk)



Fountain of Life Network Church, Ashill



FOUNTAIN OF LIFE

NETWORK CHURCH

The Fountain of Life is a single church in 2 locations with different forms of mission and outreach in each. These offer a wide range of pioneering opportunities. The team currently consists of 1 Senior Minister, and 12 Authorised Worship Assistants. There are also 18 paid employees including Children, Youth and Families Workers, an Administrator, Media and Communications Officer, Site Warden and a Debt Centre Manager most of whom are part time.

We are a Spirit-led family of believers, rooted in God's word, with a mission to bring the light and hope of Jesus to our communities: A missionary congregation of the Church of England.

We strive to be a welcoming church family that is missional at heart, courageous in stepping out, and values the talents and gifts of our members. We value scripture, the power and presence of the Holy Spirit, and the desire to extend the Kingdom of God in the communities we serve.





FOUNTAIN OF LIFE

NETWORK CHURCH

THE SENIOR MINISTER AND MINISTRY TEAM



SENIOR MINISTER

My own experience of ministry at The Fountain of Life has been fantastic. I've had the opportunity to see a much wider range of ministries than quite a lot of the other churches I've attended in the past could have offered. FoL has great facilities and has made every effort to maximise the use of the premises in training, worship and outreach. I would expect an Associate Minister to be afforded every opportunity to try new things without fear of failure. The church's philosophy has always been that we are vision led - so staff and congregation are encouraged to look for the things that God wants to bless and to work with that. The result is a thriving, growing congregation who are as excited by mission as the leadership are and that's a great place to learn and grow together. The successful candidate will have the opportunities to explore new possibilities and to start new ministries that fit with the context of the church.

I believe it's good to be given space to try new things out, to 'have a go' without the worry of criticism or condemnation if things don't quite work out the way we hope they will.

Since we don't have a defined parish we tend to take occasional offices for our own congregants which means there are only limited opportunities in the area of occasional offices. However, when those opportunities have arisen they have been all the more special as a result.

There is a strong team of clergy, retired clergy, lay leaders, paid staff and volunteers who operate a wide range of ministries. There are great opportunities to become involved in a broad spectrum of missional and pastoral initiatives with the opportunity to take on leadership responsibility in a variety of areas.



folchurch.co.uk



paul.wilkinson@folchurch.co.uk



[@folchurchnorfolk](https://www.facebook.com/folchurchnorfolk)

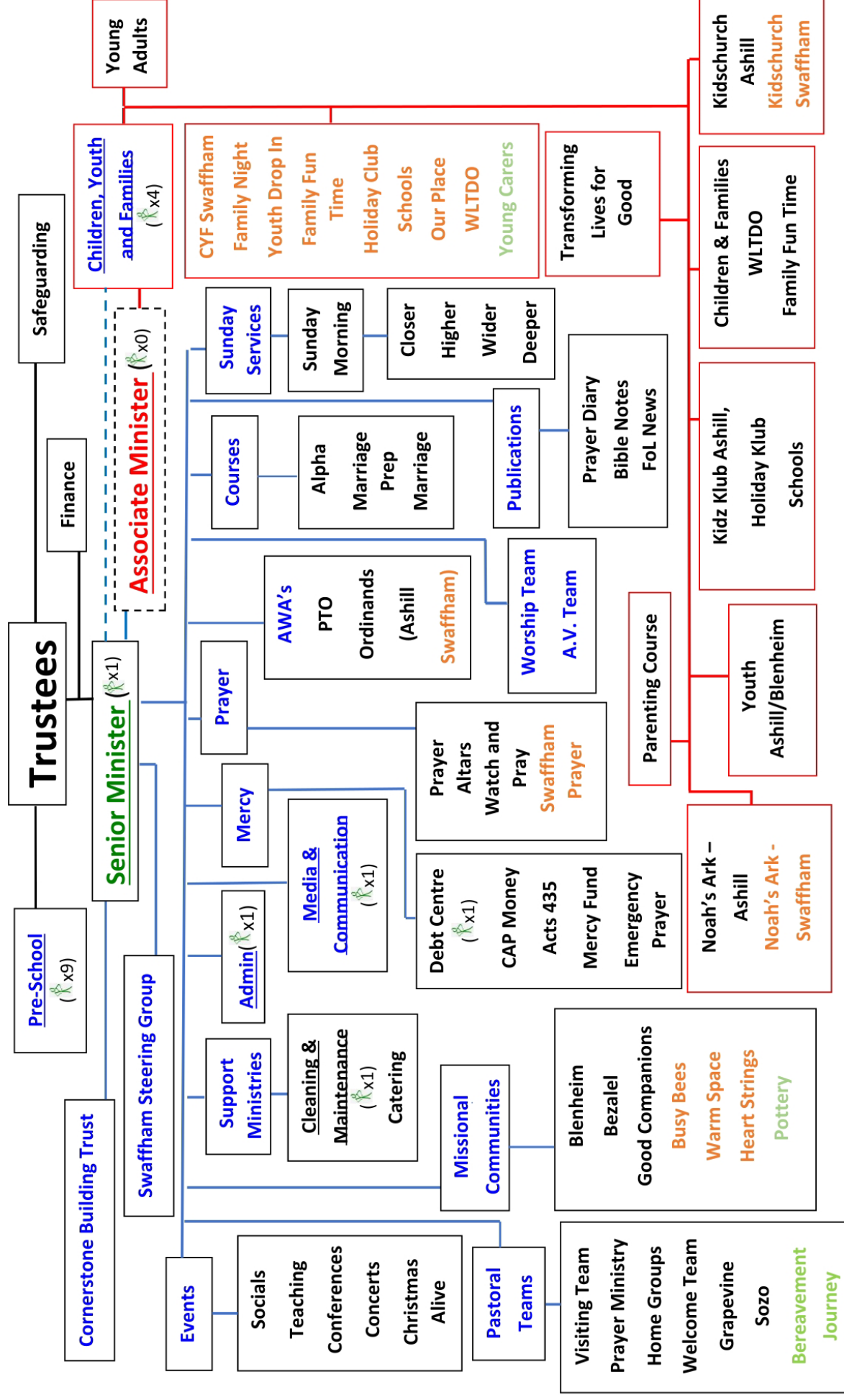


[@folchurchnorfolk](https://www.instagram.com/folchurchnorfolk)



Fountain of Life Network Church, Ashill

FOL CHURCH STRUCTURE | DECEMBER 2025



Blue = Ministry Category **Red** = New Post **Orange** = Swaffham **Green** = Ministry Not Yet Started (x1) = Paid Staff

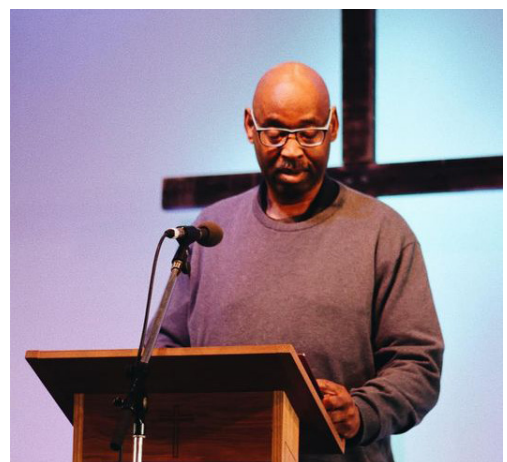
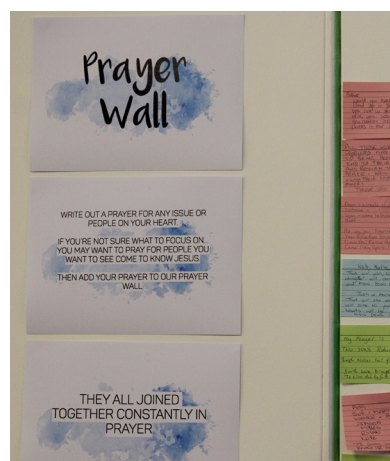


FOUNTAIN OF LIFE

NETWORK CHURCH

FoL is open to working with other organisations and ministries.

FoL has an established policy of encouraging staff and team to develop their learning, their skills and their personal development. FoL is currently supporting one member of staff who is engaged in youth work and theological training at Ridley Hall. Others have taken the opportunity to undertake training courses that have been appropriate to their own particular vocation.



folchurch.co.uk



paul.wilkinson@folchurch.co.uk



[@folchurchnorfolk](https://www.facebook.com/folchurchnorfolk)



[@folchurchnorfolk](https://www.instagram.com/folchurchnorfolk)



Fountain of Life Network Church, Ashill



FOUNTAIN OF LIFE

NETWORK CHURCH

THE TEAM

Senior Minister:

Rev'd Paul Wilkinson

Senior Youth Leader:

Joe Welch

Kidz Klub Team:

Joe Welch

Administration:

Becky Russell

Media and Communications:

Amanda Harris

Debt Centre Manager:

Angela Clark

Missional Communities Leaders:

Andrew and Julia Rees

Site Warden:

Andy Lowles

Pre-School Manager:

Becky Russell

Noah's Ark (Parent & Toddlers):

Andrea Jolly, Rachel Kehoe

Swaffham Children Youth and Families Worker:

Tanya Lynn





FOUNTAIN OF LIFE

NETWORK CHURCH

AUTHORISED WORSHIP ASSISTANTS

Tim Wilson

Dan Russell

Andrew Rees

Julia Rees

Matt Beckett

Harriet Beckett

Graham Cracknell

Graham Chittock

Olivia Jabourian

John Watts

Ron Smith

Stacey Jones

Joe Welch

RETIRED CLERGY

Rev'd Stephen Mawditt

Rev'd Robert Edwards

ORDINANDS

Paul Hamilton

Bassem Sawieres



WORSHIP TEAM LEADERS

Dan Russell

Carol Holmes





FOUNTAIN OF LIFE

NETWORK CHURCH

GENERAL INFORMATION

SCHOOLS IN THE AREA

First Steps Christian Pre School at FOL
Ashill Primary School
Wayland Academy, Watton (High School)
Schools also in Swaffham, Watton and Litcham

ACCOMMODATION

A 3-4 bedroomed house is available in Ashill or a housing allowance can be made available for a candidate wishing to live in their own home if that is preferred.

TRANSPORT LINKS

There are limited bus services in and out of the village. Access to the A47, A1065 and A11 allow relatively easy travel through the region.

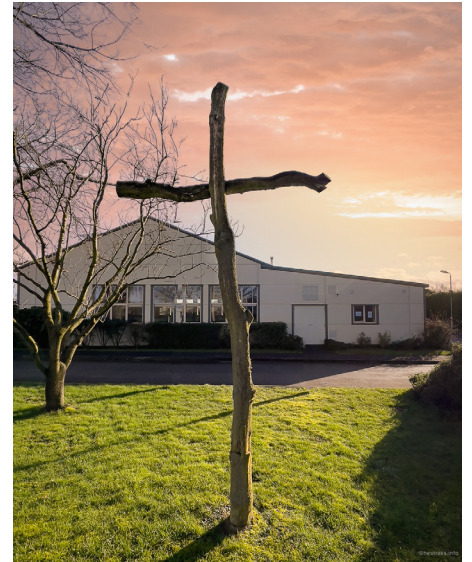
Access to personal transport is desirable for this post because the ministry covers a wide geographical area.

MARKET TOWNS

Swaffham and Watton

NEAREST CITY

Norwich



folchurch.co.uk



paul.wilkinson@folchurch.co.uk



[@folchurchnorfolk](https://www.facebook.com/folchurchnorfolk)



[@folchurchnorfolk](https://www.instagram.com/folchurchnorfolk)



Fountain of Life Network Church, Ashill



FOUNTAIN OF LIFE

NETWORK CHURCH

THANK YOU

Thank you for taking the time to look through this profile. We are praying for you and, trusting that God will guide your discernment.

Should you feel led to explore this calling further, we would be honoured to connect and share more of the vision God has placed on Fountain of Life Church to see his Kingdom grow in Ashill and Swaffham.



AND WE KNOW THAT FOR
THOSE WHO LOVE GOD ALL
THINGS WORK TOGETHER
FOR GOOD, FOR THOSE WHO
ARE CALLED ACCORDING TO
HIS PURPOSE.



Romans 8:28

BELONG | BELIEVE | BECOME

We are a Spirit-led family of believers, rooted in God's word, with a mission to bring the light and hope of Jesus to our communities:
A missionary congregation of the Church of England.



folchurch.co.uk



paul.wilkinson@folchurch.co.uk



[@folchurchnorfolk](https://www.facebook.com/folchurchnorfolk)



[@folchurchnorfolk](https://www.instagram.com/folchurchnorfolk)



Fountain of Life Network
Church, Ashill