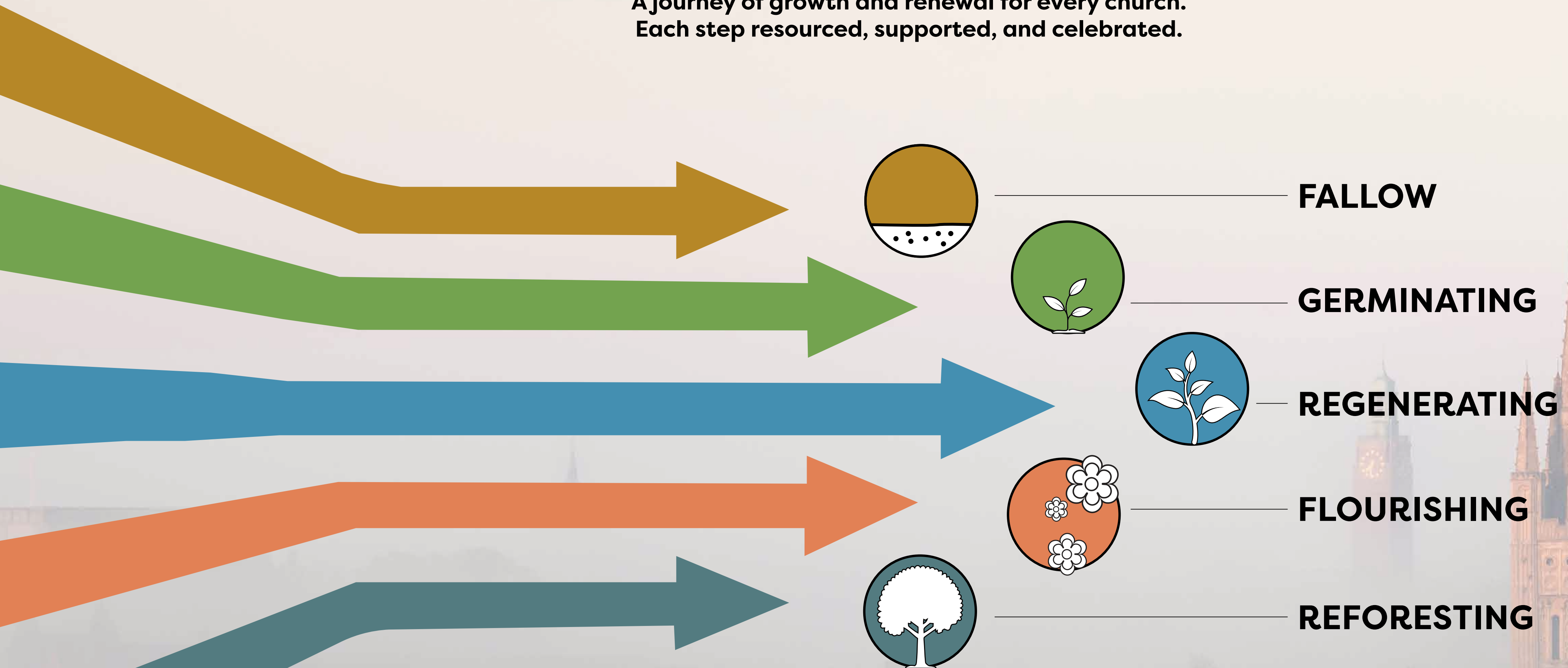


The Five Missional Streams

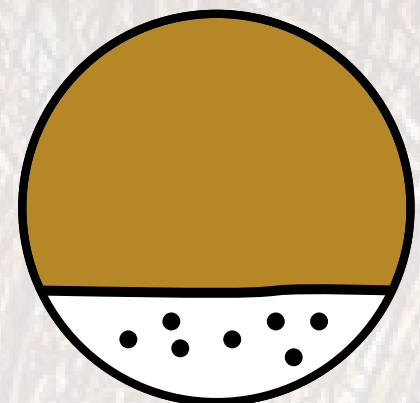
Prayerful, Pastoral, Prophetic

A journey of growth and renewal for every church.
Each step resourced, supported, and celebrated.



STREAMS

Jesus used organic imagery on numerous occasions to illustrate the Kingdom of God (Mk 4, Matt 6, John 15). Following his example, in a rural diocese, we are using ecological language to seek to listen for mission.



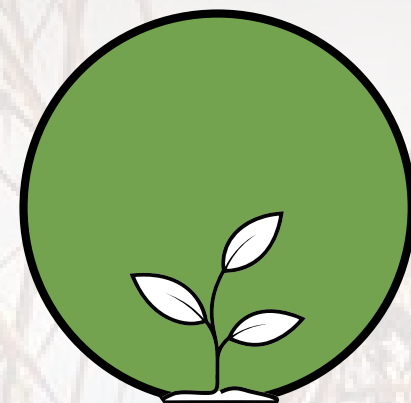
FALLOW

Fallow fields are ploughed and harrowed and then intentionally left for a period of time to restore the nutrients in the soil.

Do you have a church or ministry that is 'exhausted' and in need of restoration?

Laying a field fallow is an important step in the lifecycle of growth. It is a preparatory step before sowing and fresh cultivation

This is about identifying when and where to wait, pray and discern what next. Fallow churches can be left for a period of time to allow any organic new life such to take seed.



GERMINATING

These are areas where growth is inevitable, so long as the right conditions are nurtured.

There is sufficient life in the locality to renew what exists, or seed something new. With prayer, partnership, clear vision and vocation fruit will come.

Perhaps these are new areas of housing or well-populated localities with schools and community? There is a sense that seeds are germinating underground.

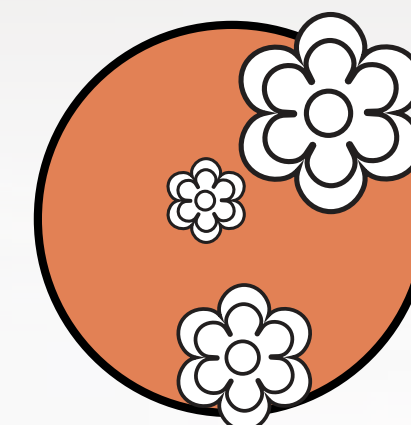


REGENERATING

These are communities that have attained a level of life-giving self-sustainable regenerative activity. They have embraced the vision of the mixed ecology and have a desire to reach multiple people groups from an established base.

They have the intention to:
Grow younger and more diverse as a church

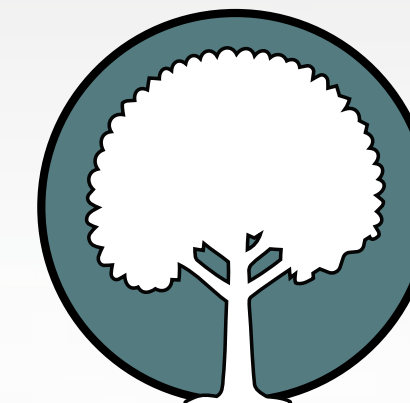
Become more fruitful, healthy and missional
Seek biodiversity in their expressions of worship and engagement in community life.



FLOURISHING

These churches, perhaps like a Market Garden, aspire to provide ample seasonal offerings for their locality and other surrounding villages. They are a growing resource base.

Similar to the Sustainable church but with greater maturity and abundance of resources and vision to match they may be in a position to help those that are fallow to become germinating, or germinating to become sustainable.



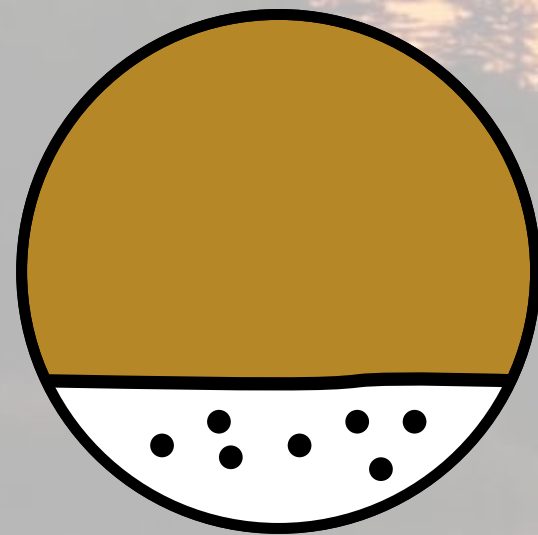
REFORESTING

Like historic Market Town Churches, The Cathedral, Civic Churches and Resource Churches they provide a stimulus for growth not only in practical ways through the training, recruiting and sending of leaders, lay and ordained, but also through altering the spiritual climate of the County.

Their use of media, communications, creativity and imagination travel far and wide to raise the spiritual profile of the church in Norfolk.

FALLOW

Resting, Listening, and Rediscovering Calling - Looking For New Shoots Of Growth



When a church or community needs space to listen, heal, and discern God's next step.

Purpose: Rekindle hope and vision; discern seeds of new life.
Move towards becoming a Germinating church.

Interventions & Resources:

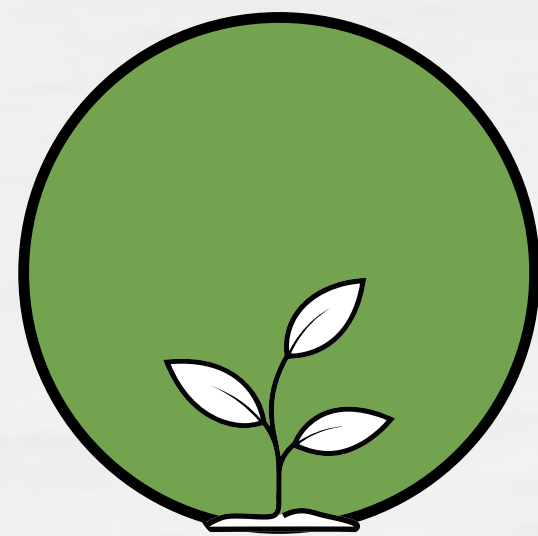
- Facilitated Conversations / Phone Support for those unable to complete the online tool.
- Mission Enabler (Stream Leader) – offering accompaniment and coaching.
- Mission Action Planning (MAP) simplified for smaller/rural contexts.
- Access to PST Buildings Team (from a stewardship or release perspective).
- Small Mission or Listening Grants – to fund first steps in community connection.
- Encouragement to join Action Learning Sets focused on reimagining local mission.
- Examples/Testimonies: e.g. Stratton Strawless story, “build the centre first.”
- Safeguarding

Goal: Restore confidence and rediscover purpose for future germination.



GERMINATING

Trying, Experimenting, and Beginning to Grow



Where imagination and faith are taking root.

Purpose: Encourage local ownership, nurture emerging shoots of life.

Interventions & Resources:

- Stream-based online community with targeted films and talks (intro from Bishop).
- Mission Enabler contact one day/week to accompany leaders.
- Short practical courses like Cornerstone (for stewardship) and PGS setup.
- Training on sharing faith and running missional activities.
- Small or medium innovation grants – to pilot new approaches.
- Action Learning Sets – connecting churches experimenting with fresh mission.
- Connection to “Thrive” or “Grow” courses (intro-level leadership and mission).
- Safeguarding

Goal: Build confidence, clarify identity, and develop sustainable habits of mission.



REGENERATING

Deepening Roots and Building Health



A stable and engaged church developing rhythm, leadership, and discipleship.

Purpose: Strengthen culture, leadership, and discipleship foundations.

Interventions & Resources:

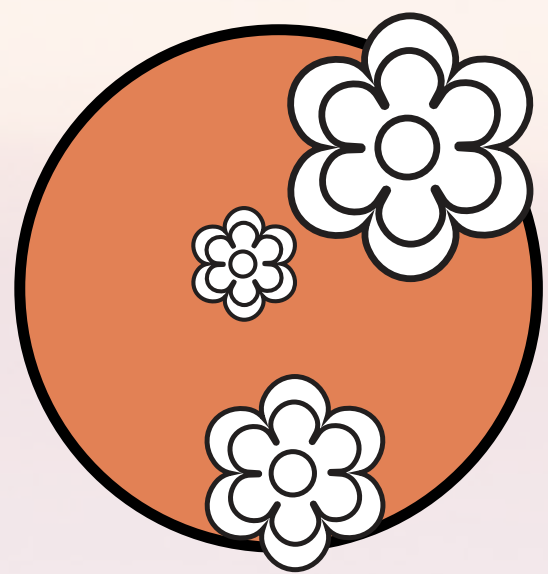
- LYCIG (Leading Your Church Into Growth) — core discipleship and mission tool.
- Leadership support and peer learning sets for clergy settled in post.
- Lay Leadership Pathways — working agreements, training, and commissioning for AWAs, Youth & Children's Workers.
- MAP for focus and direction with access to small grants.
- Stewardship Campaigns and Generosity Tools — e.g. PGS, Cornerstone.
- Action Learning Sets for leadership and culture change.
- Goal: Embed a culture of participation and shared leadership
- Safeguarding

Embed a culture of participation and shared leadership



FLOURISHING

Multiplying Life and Maturity



A vibrant, Spirit-filled church bearing fruit in community and partnership.

Purpose: Multiply impact, share learning, and extend generosity.

Interventions & Resources:

- Mission Communication Campaigns (“Power of One”) to inspire and celebrate.
- Diocesan Mission Events and Festivals in partnership with local churches.
- Thrive or Advanced LYCIG courses for sustainable growth.
- Support for vocational pathways — including CYF Ministers, Elizabeth Pathway.
- Church Grants or Plants — supporting others in earlier stages.
- Action Learning Cohorts for Flourishing Leaders — mentoring across the Diocese.
- Safeguarding

Goal: Equip leaders and communities to multiply health and generosity.



REFORESTING

Releasing, Planting, and Multiplying



A church that gives itself away – resourcing others and shaping a mixed ecology.

Purpose: Resource and renew the wider landscape.

Interventions & Resources:

- PLANT / Camino / Accelerate Programmes – focused on multiplication.
- Myriad and AWA – for lay pioneer and multiplication training.
- Garden Church development – growing New Worshipping Communities (NWCs).
- Partnership with St Benet's Chaplaincy Model – for younger generations.
- Church Grafts and New Initiatives – in rural and urban contexts.
- Participation in Cultural and Heritage Partnerships (reimagining buildings for mission).
- Mentoring and storytelling roles – becoming exemplars for others
- Safeguarding

Goal: Restore confidence and rediscover purpose for future germination.

