


‘For I know the plans I have for you, plans to prosper you and not to harm you, plans to give you hope and a future’.

Jeremiah 29:11 (NIV)

St David's Church Thorpe End Norwich

Parish Profile





We believe that
Jesus calls His Church in
Thorpe End to be the
Spirit - filled body of Christ,
loving and serving our
community.

St David's was created as a single Church parish following a pastoral re-organisation in 2018.

We hope this Parish Profile helps you get to know a bit about us, our Church, our people and our community.

Following the retirement of our previous Vicar, we are now praying that God is preparing and leading the person He has chosen to join us on a 'house for duty' basis to lead us in our mission here in Thorpe End and our wider community.

Could it be you?

Who are we looking for?

“We would value in our new Incumbent someone to help us sustain and further develop the prayer life of our worshipping community.”
Jenny Barnard
LLM(PtO)

To support our mission, we are seeking someone for this part-time role who:

- will help to lead us into a deeper understanding of God and His plan for our church, through the guidance of His Holy Spirit, seeing the huge potential that is here
- will take a strong pastoral role and show a real sense of love and care towards our congregation and our community
- will lead our church forward to be a visible, tangible presence in the wider community, and who has a vision for bringing the good news of Christ to our community.
- will lead us in growing in numbers and growing younger.
- has the skills to engage warmly with people, so they feel loved and valued, and to welcome new people and families into the life of the church.
- will recognise and celebrate the variety of gifts amongst the congregation and encourage these to flourish, **as we work together and support each other to serve God.**

Exciting opportunities

We believe that Jesus calls His Church in Thorpe End to be the Spirit - filled body of Christ, loving and serving our community.

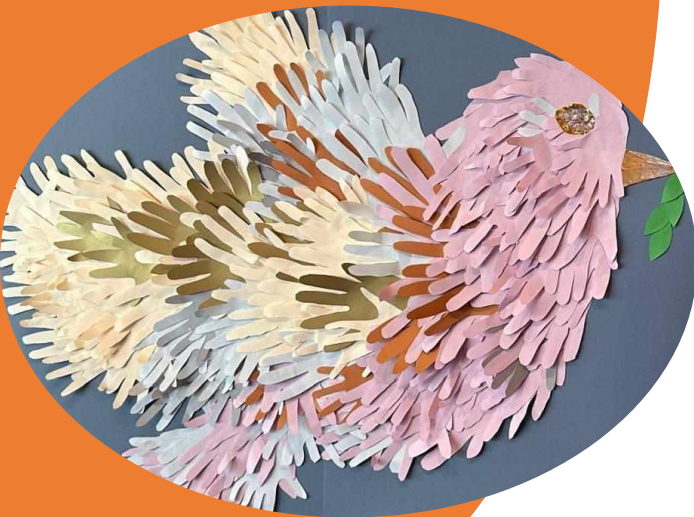
We are looking for someone to join us in this part-time role as together we embrace the exciting opportunities ahead.

We have exciting plans to take the Church forward – but know we need to do this collectively and sustainably. Our plans include (in no particular order!):

- Sustaining and building on links we have already made (e.g. with families via Messy Church and Holiday Club, Teddies (local pre school), our local care home and the community generally)
- Welcoming and encouraging new people of all ages and backgrounds into the worshipping life of the Church
- Exploring a wider variety of styles and forms of worship, for the benefit of the existing congregation as well as those less familiar or new to Church
- As a caring Church finding the best approach to pastoral care
- Reaching out, welcoming and serving the whole parish, including the new large development being built in the south of the parish
- Supporting our spiritual growth and development, as individuals and as a Church

Called
to be the
Spirit Filled
Body Of
Christ....

Sundays
with us...



- We currently have one weekly 11am Sunday Service.
- Most services are Eucharistic, as Parishes are required to have a service of Holy Communion each Sunday.
- However, we have permission to have a Service of the Word one Sunday each month:
 - This service has a more informal and creative approach, designed to be more accessible to people less familiar with a formal church service
 - It also provides more opportunities for wider active lay involvement through, for example, prayer, thanksgiving and choir-led worship songs
 - Often, this service is led by the AWA and Sermons preached by the LLM (PtO)
- We have recently introduced a short period of silent preparation at the beginning of Services, as we prepare for worship.
- Service details are shown on screen (powerpoint) in Church and we also usually Zoom services so members of the congregation who are unable to be in Church can continue to worship with us.
- Services are followed by refreshments and fellowship in the Church Hall.
- We have a number of very talented musicians who play the piano or organ for services (and we sometimes also use videos)
- Our choir supports special services such as Easter and Christmas
- We have volunteers who welcome people for services, who read, lead intercessions, decorate the Church, make teas and coffees, wash up and so on

...and
during the
week...

.... loving and
serving our
Community

Church groups and other services

- We have a small but faithful weekly Prayer Group who meet online
- We have held Lent and Advent Bible Study courses

Special Services

- Historically we have had only a few weddings, baptisms and funerals at St David's
- We have appreciated special Remembering Services, a Healing Service and Pet Services

Anna Chaplaincy and older people

- Our Anna Chaplain (Nicky) and Anna Friends have established close links with our local Care Home and regularly visit, and support individuals, offering spiritual support and encouragement to older people.
- We have a well-attended monthly 'Coffee, Cake, and Company' group for anyone in the village who would like to enjoy a hot drink, delicious cake and friendly chat!



... and at
weekends

.... loving and
serving our
Community

Children and Families:

Whilst children and families do not come regularly to our Sunday morning services, our creative and enthusiastic team loves reaching out to them in other ways:

- We have well-attended Messy Church sessions four times a year
- We also run a 3-day Holiday Club in the Summer for primary school aged children, which attracts over 40 participants. Parents are invited into the church on the final day to share in an informal service and refreshments. We are delighted to welcome back a number of teenagers each year, who help run the Club.



As well as meeting Children and Families, Holiday Club, Messy Church and the Choir offer opportunities for us to connect with a wide variety of people of all ages, for us to get to know them and for them to get to know us, and to welcome them into the Church.

Our Church Family

Our Church is warm, welcoming and hospitable

- Our congregation is drawn from a variety of Church traditions, backgrounds and denominations who enjoy the style of worship, value the warm, caring community at St David's and who share in our mission as God's people in this place
- Our Sunday congregation is usually between 30 and 40 people, some of whom live outside the parish
- Our numbers have been gradually rising - we had 100 people at our Carol Service!
- Collectively we have many years of wisdom amongst us (or in other words we are mainly an older congregation!)
- We do not have a regular Family/All age Service on a Sunday morning, but Services are built into Messy Church and Holiday Club

We take every opportunity we can to celebrate with cake!



you and your special friends are invited to our
Pet Service
Sunday 2nd October 4.00 pm
St David's Church, Thorpe E



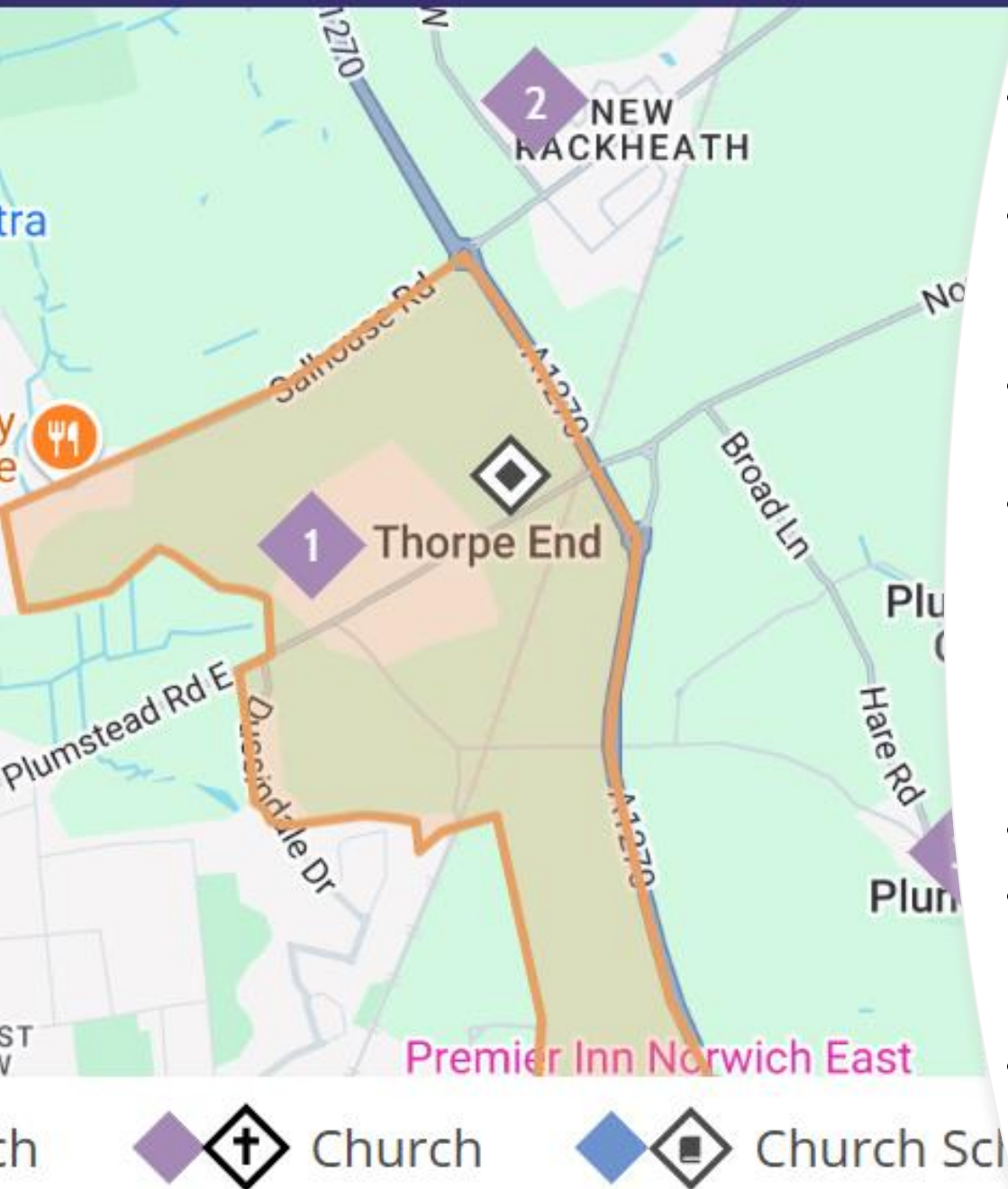
What else goes on at St David's?

Social and Community Events (and Fund Raising):

- We run a very popular Concert Series at St David's that attracts a wide audience and is great for fund-raising!
- We hold an annual Plant and Craft sale where people can stop for refreshments and a chat
- St David's has excellent facilities which are hired out to the community on a regular basis. During term time, 'Teddies', our local pre school group, meet in our Church Hall. Other groups include a Table Tennis Club, 'Pins and Needles' sewing group, Gardening Club and Thorpe End Residents' Association, to name but a few.
- We have opened the church for the village Christmas Lights evening, with our own creative Christmas display of the Nativity Story, and have in the past hosted a village Flower Festival and organised 'Open Gardens'.



About the area



- Thorpe End Garden Village is in a relatively affluent area, being in the top ten percent of least deprived parishes
- The village was originally developed in the 1930's and has grown rapidly from 600 homes to approximately 800 homes over the past few years due to new housing developments
- In the 2021 census the population of the parish was 1,455 with 54% of these declaring that their religion was Christian
- The village is approximately 4 miles from the centre of Norwich with good road links to the north and south of the city. In the area there are two supermarkets within 2 miles, and in the surrounding villages, doctors' surgeries, convenience stores, public houses, restaurants and a petrol station
- Norwich is a vibrant, thriving, creative City
- There are many places of natural beauty in the area, such as woodland and water gardens, nature reserves, the Norfolk Broads, and the North Norfolk coast is under an hour's drive.
- Thorpe End is within Broadland District Council; our Parish Council covers Thorpe End, Great and Little Plumstead and Witton.

Our local schools

There is
no school
within the
Parish so...



'Teddies', the local pre-school group, meets regularly in St David's Church hall (Monday to Thursday). We have an excellent relationship with this group, which has run for many years. At times, like Christmas and Easter, members of the church have celebrated with the children and their parents, in short sessions of songs and stories. We want to encourage and develop further our good relations with this group



Most of the younger children who live here attend Little Plumstead VA Primary School, our catchment primary school. Before the Pastoral Reorganisation, many of our congregation served as Governors at the school



Most older children move on to Thorpe St Andrew Secondary School, in our neighbouring parish

A bit more about us – and what we can offer you (and some of our lovely Church family)

We believe that
Jesus calls His Church in
Thorpe End to be the Spirit
- filled body of Christ,
loving and serving our
community.



Jenny Barnard, Licensed
Lay Minister (PtO)



Nicky Dunnett, AWA, Anna
Chaplain, Church Warden, Music
and Children and Families lead



Peter Soden, Church Warden, Fabric
Officer and Safeguarding Officer



A fully committed, active and
supportive PCC (Sue, PCC secretary)



The Church Mission is very well
supported by the congregation
(Jan)



Talented and active teams
supporting worship, services,
outreach and events (Rachel)

What we can offer
you

Clergy Wellbeing and Safeguarding



We understand that being a member of the clergy can be very demanding of time and wellbeing. We will support you, including by ensuring annual leave is taken, supporting an annual retreat, and reimbursing expenses relating to the role.

Safeguarding is of paramount importance, and the PCC is committed to ensuring the safety and wellbeing of children, young people and vulnerable adults. We have adopted the CoFE Safeguarding policy, which is displayed at our church with other safeguarding materials. We also promote the role of our Parish Safeguarding Officer to ensure that any users of our church can be supported should they have any issues or concerns.



What we can offer
you

Our Church Buildings

Our Church building is just over 30 years old.

We have well maintained, flexible, modern facilities, with integral hall, meeting room, well equipped kitchen, toilets, an internal courtyard and a car park.

All areas are accessible, and we have a power assisted front door, hearing loop and accessible toilet, with baby changing facilities.

We host the Parish Council's village defibrillator on our external wall.

A small area of the garden is consecrated, and we have developed a small Remembrance Garden alongside this.

We have also planted a wildflower area.

We also have good heating...



What we can offer
you

The Rectory

- The Rectory is a large detached house situated on a quiet tree-lined cul-de-sac set within the attractive conservation area of Thorpe End.
- Downstairs the property has a spacious office, a separate dining room and a large lounge with a parquet floor and french doors which open onto the garden. There is also a kitchen and a utility room with pantry as well as a shower room with toilet.
- Upstairs are 4 spacious bedrooms and a bathroom with a bath and shower.
- The property has a manageable garden with room for off-road parking and a garage.
- The Rectory is a 5-10 minute walk from St Davids Church.



What we
can offer
you

Our Finances

- Since the pastoral reorganization in 2018, St David's has paid its Parish Share in full each year
- Our Finance Policy includes details of the charities St David's will support each year
- Our congregation give generously of their time, talents and money
- We try to keep costs down for example by doing as much maintenance as we can ourselves, but we also invest in maintaining our estate
- In addition to giving, we raise money by letting our buildings and by fund raising events

'As Christians, we are called to be generous in our giving, and to be good stewards of the Church's resources, using them prayerfully and carefully to support the mission of the Church'

Finance Policy,
St David's Church, Thorpe End



Music for a Winter Evening

A Concert of
Christmas Choral Favourites
and seasonal instrumental works
performed by
A Consort of Voices and local musicians
(in aid of Church funds)
directed by David Dunnett

A Summer Concert

An evening of light-hearted music,
perfect for a Summer Evening featuring
Corena, Jacob and Daniel
Cracknell (guitars)
Jonathan Jolly (saxophone)
and David Dunnett (piano)
Saturday 22 July 7.30 pm
at St David's Church,
Thorpe End
Tickets £10 (includes wine &
refreshments) in advance from Aika
on 011625 837680 or on the door



Some helpful links :

[St Davids facebook page](#)

Diocese of Norwich [Home - Diocese of Norwich](#)

Church of England [Home | The Church of England](#)

Living and working in Norfolk – Norfolk County Council [Jobs, training and volunteering - Norfolk County Council](#)

Anna Chaplaincy [Anna Chaplaincy | Offering spiritual care in later life](#)
[facebook.com/teddiesthorpeendpreschool](#)

[Little Plumstead C of E Primary Academy – Home](#)

[Home - Thorpe St Andrew School and Sixth Form - Thorpe St Andrew School](#)

**Thank you for reading this parish profile.
We look forward to meeting you.**