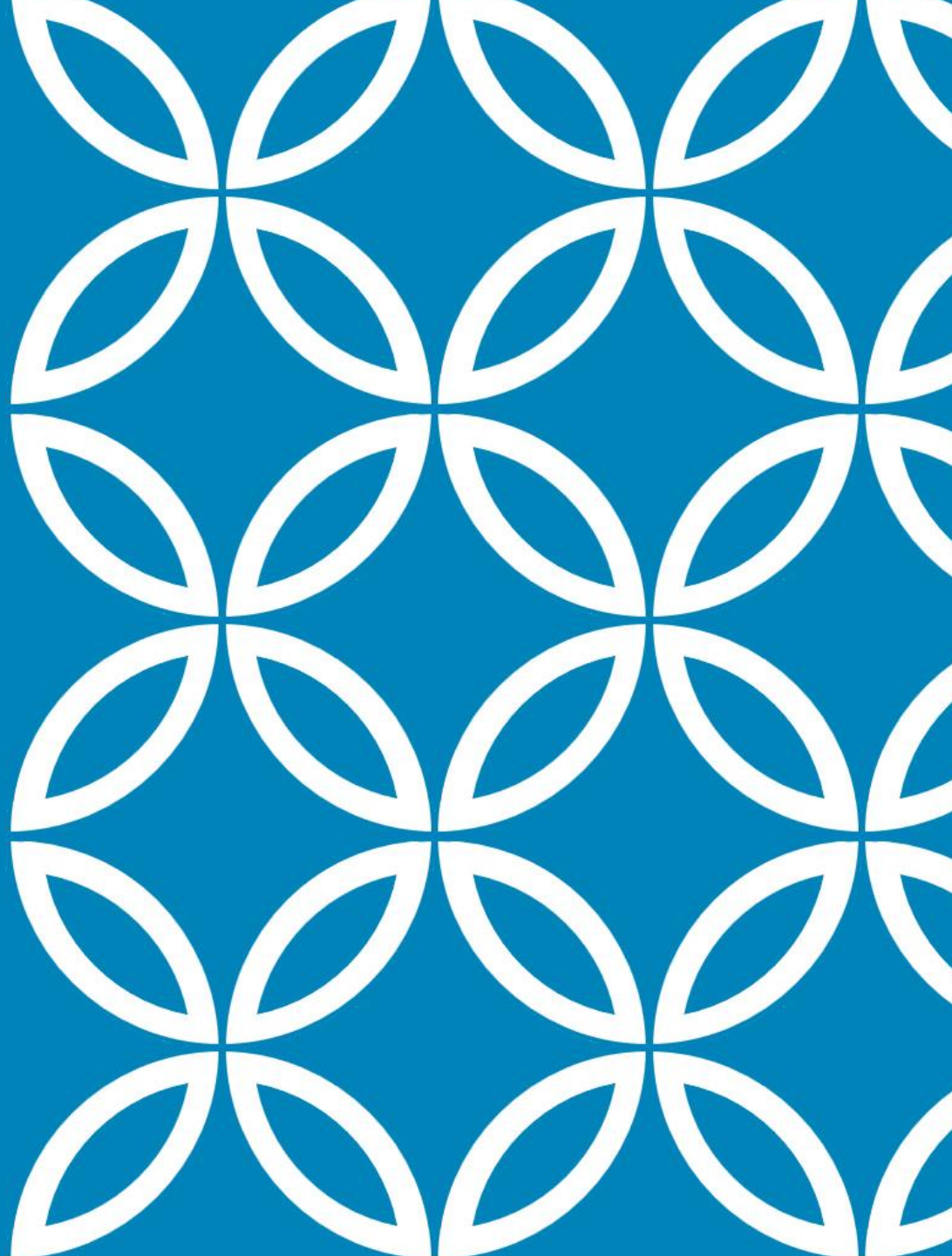


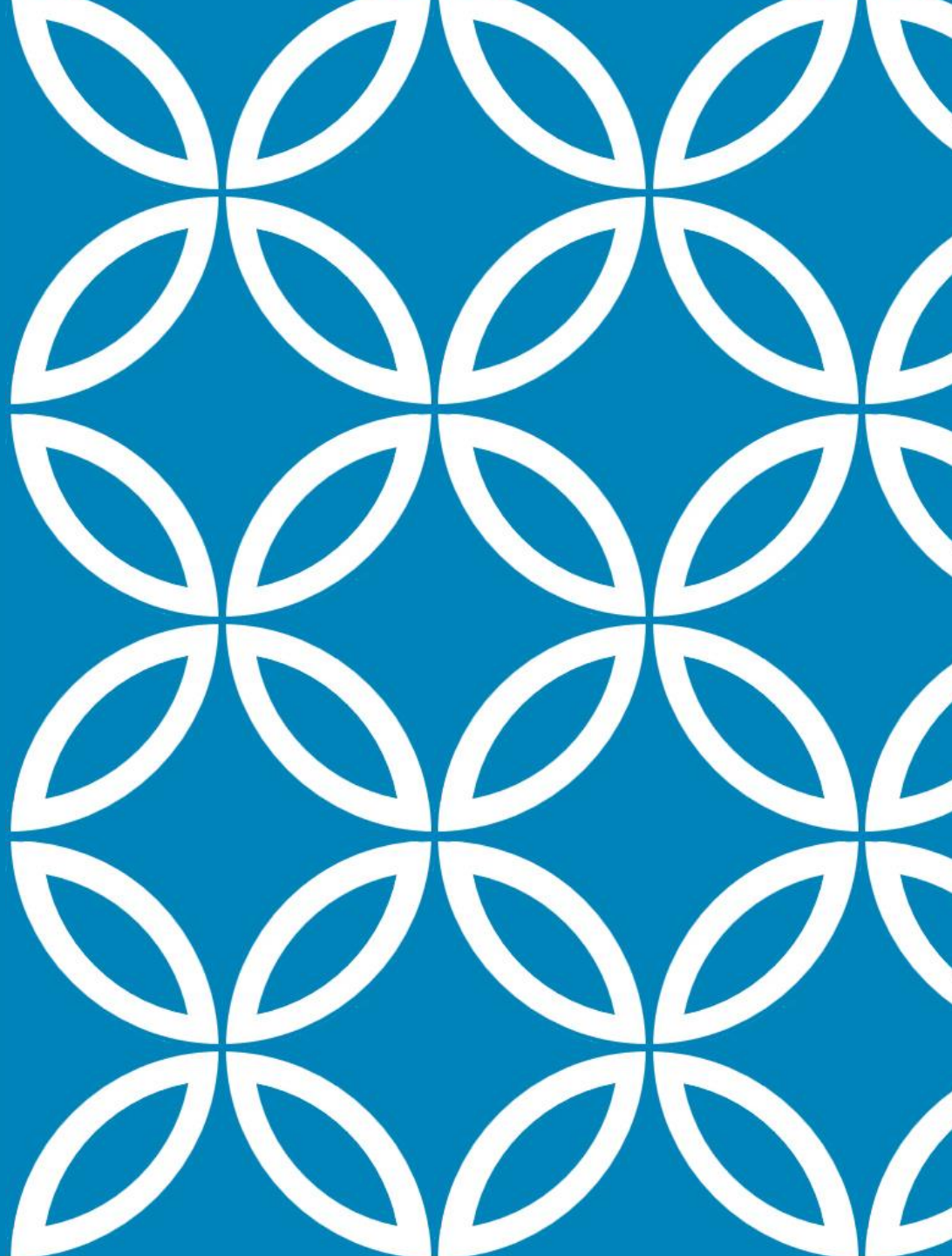
MODELS OF
CHURCH
PLANTING &
REVITALISATION

Norwich Diocese



QUICK INTRO

Rhiannon King



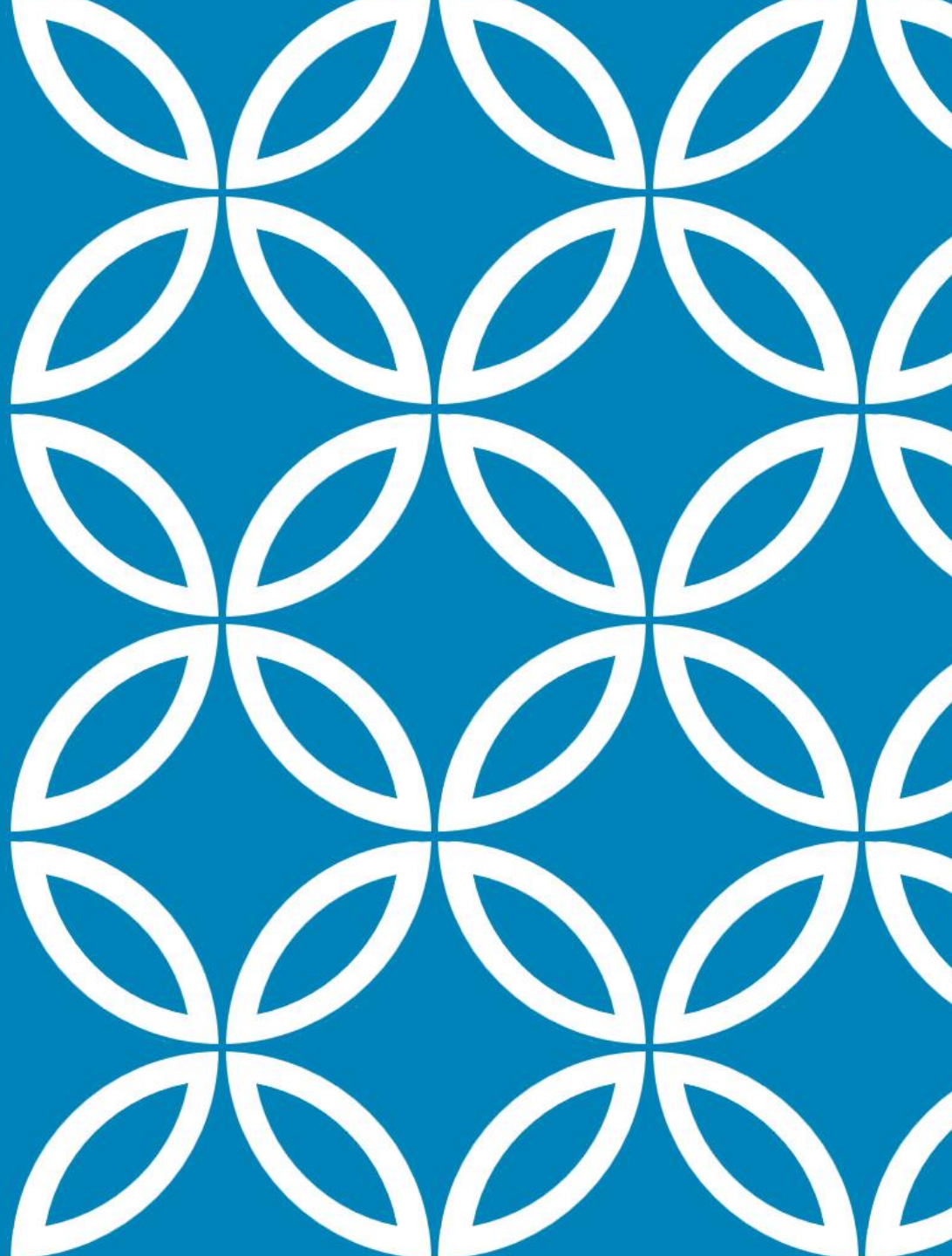
FRESH EXPRESSIONS

MESSY CHURCH
CAFÉ CHURCH
FOREST CHURCH
NEW MONASTIC
COMMUNITIES
NETWORK CHURCHES
YOUTH CONGREGATIONS

CHURCH PLANTING

TRADITIONAL CHURCH
PLANTING MODEL
MINSTER MODEL
MULTI-SITE MODEL

REVITALISATIONS



Meets for worship on Sundays

Introducing...

08:00

St Jude's

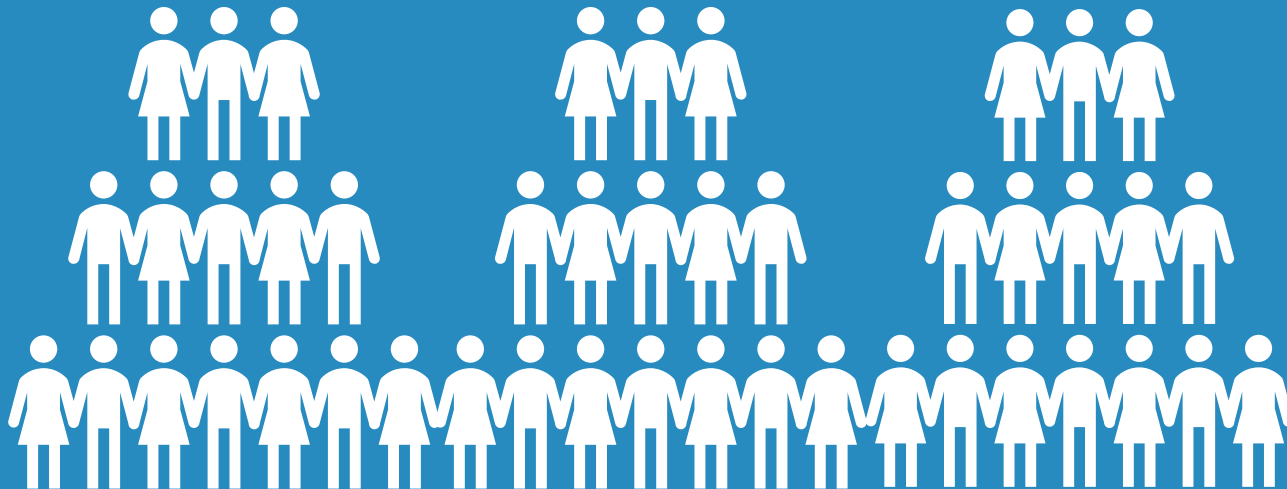
09:30

St Mary's

11:00

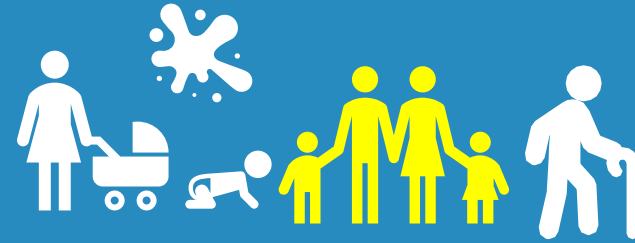
St James'

Spring Valley Deanery



Three Rivers United Benefice

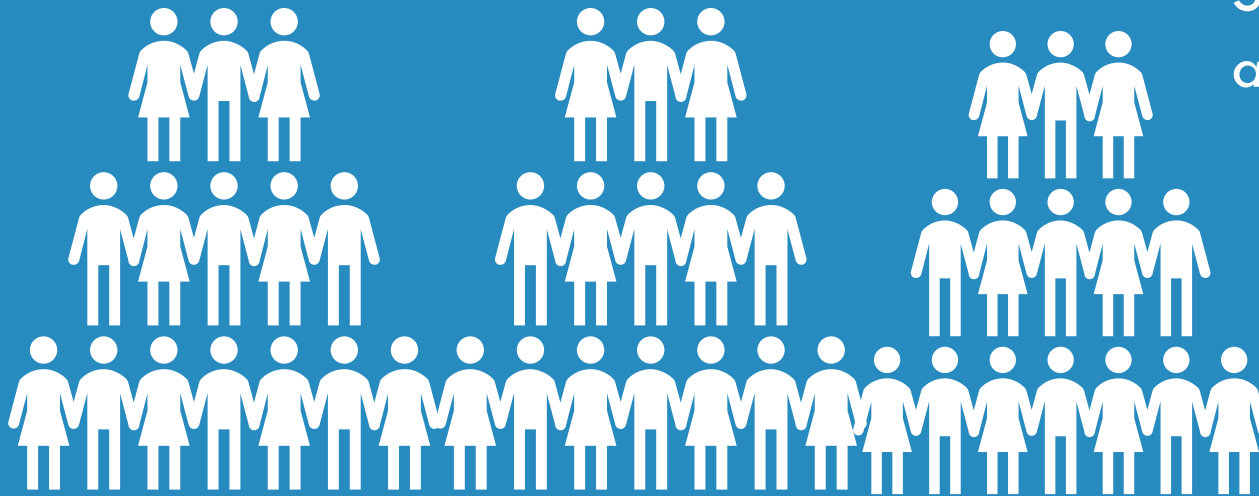
Messy Church Model



Three Rivers Messy Church



*Meets
monthly on
Saturday
afternoons*



Three Rivers United Benefice

Messy Church Model

NB A Messy Church is a fresh expression of Church if:

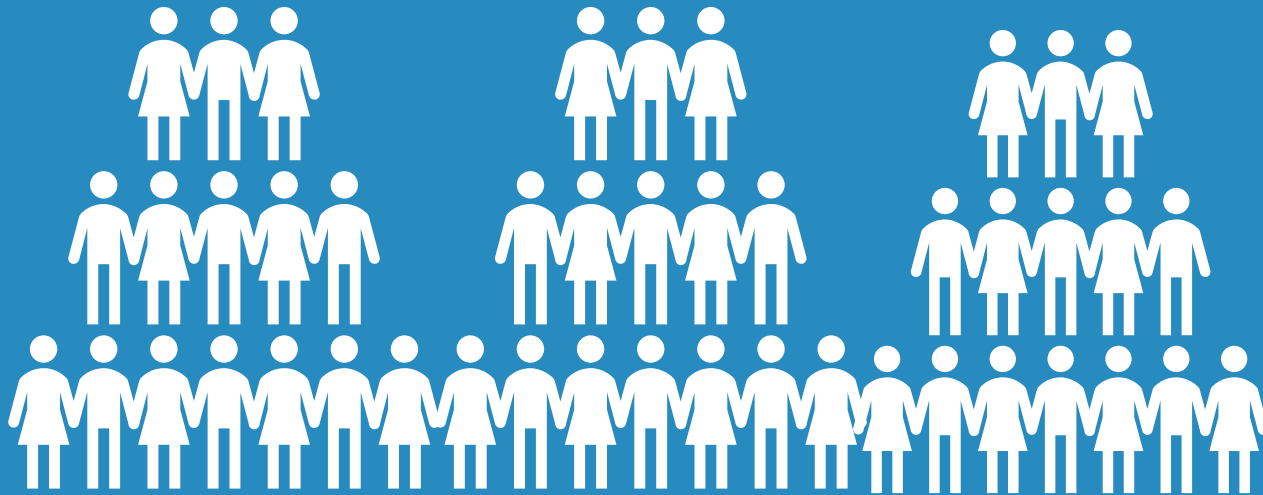
1. It is new, not a new name for an old group
2. It's intention is to engage with non-churchgoers
3. It meets at least once a month
4. It has a name and its own identity
5. Its intention is to be church on its own, not feed into 'real' church.
6. It is Anglican or in an ecumenical partnership & comes under authority, e.g of a Bishop
7. There is some form of recognised leadership
8. The majority of leaders see it as their main church
9. It is aiming to be one, holy, catholic and apostolic
10. It intends to become or is already self-financing, self-governing and self-reproducing

Meets monthly on Saturday mornings

Cafe Church Model



Three Rivers Cafe Church



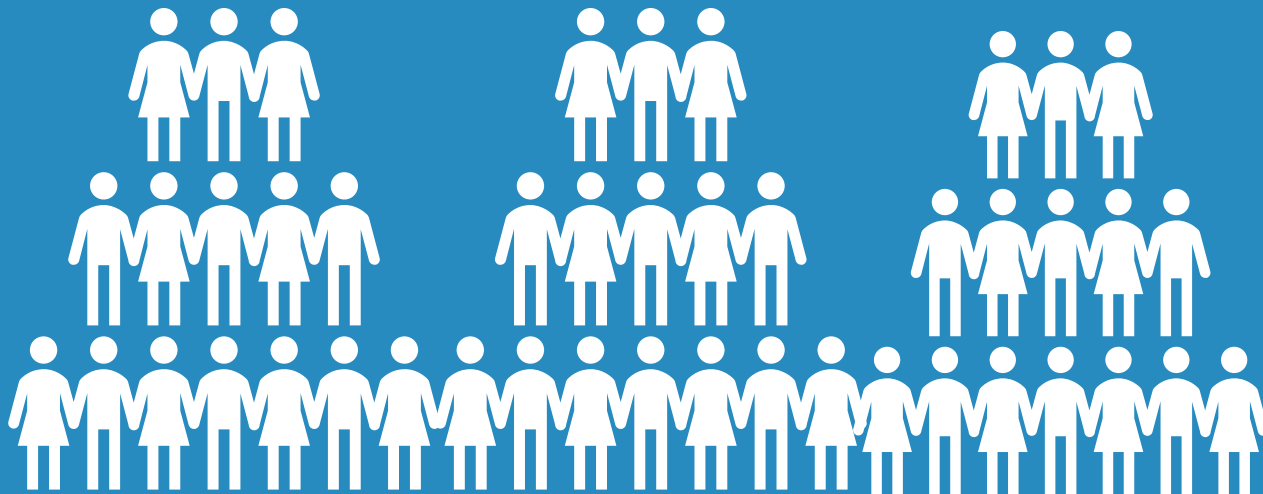
Three Rivers United Benefice

Forest/Green Church Model

Meets monthly on Sunday afternoons



Three Rivers Forest Church



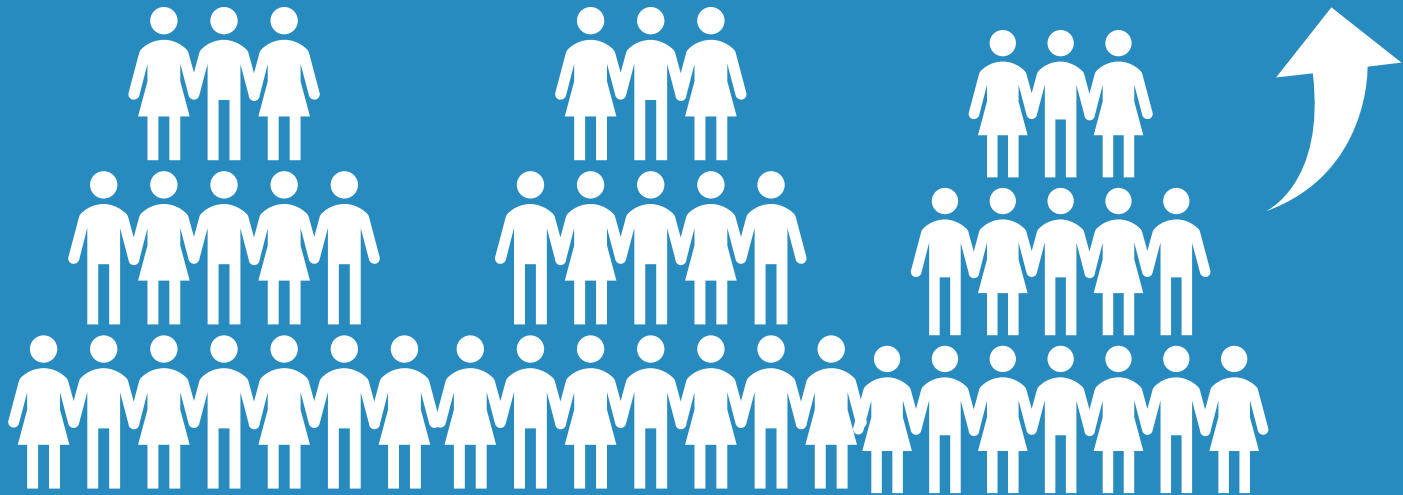
Three Rivers United Benefice

Meets daily for prayer

New monastic community



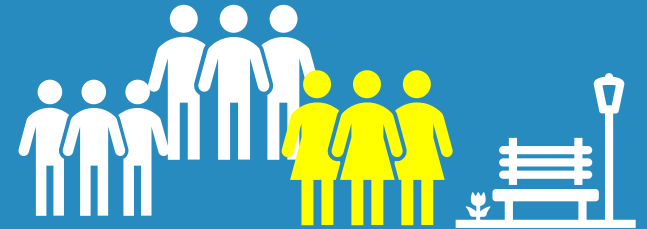
Three Rivers New monastic community



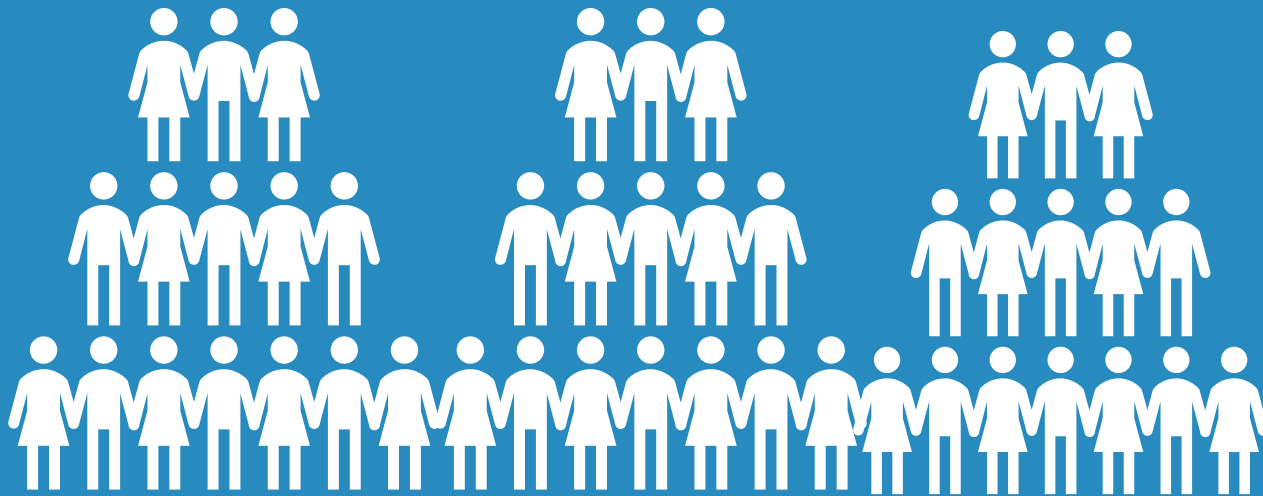
Three Rivers United Benefice

Network Church

Meets monthly across the deanery



Spring Valley Network Church



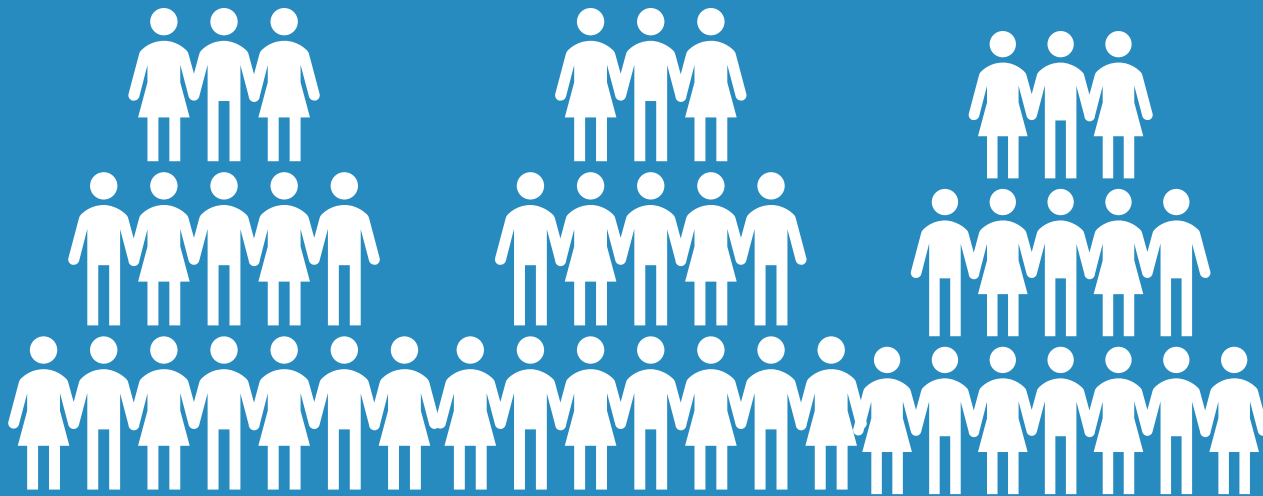
Three Rivers United Benefice

Youth Congregation

Meets weekly on Friday nights

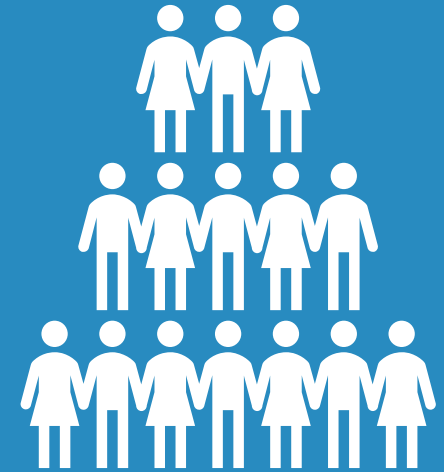


Spring Valley Youth Congregation



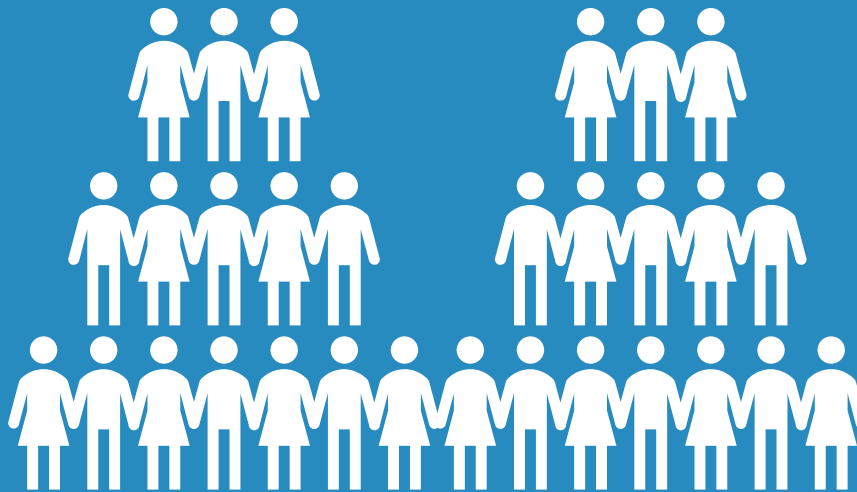
Three Rivers United Benefice

Traditional Church Planting Model



St Peter's

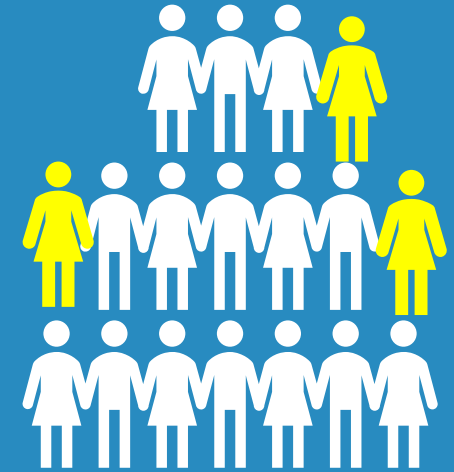
Meets every Sunday morning



Three Rivers United Benefice

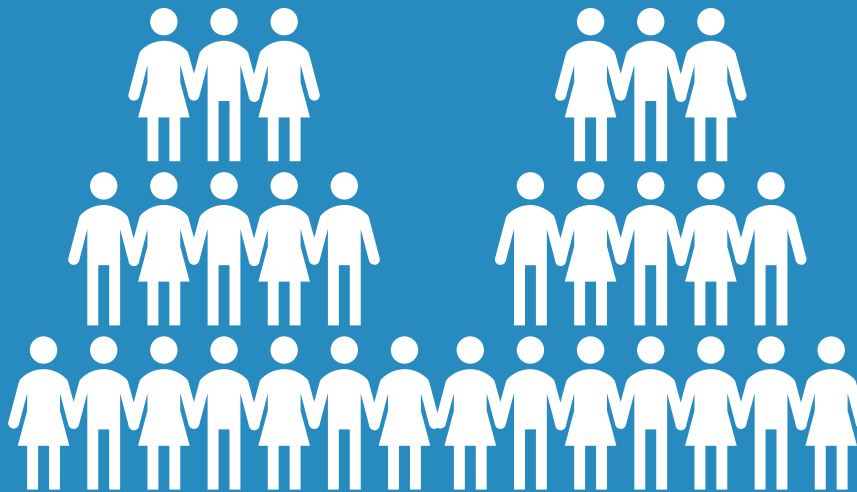


Minister Model of Church Planting



St Peter's

Meets every Sunday morning

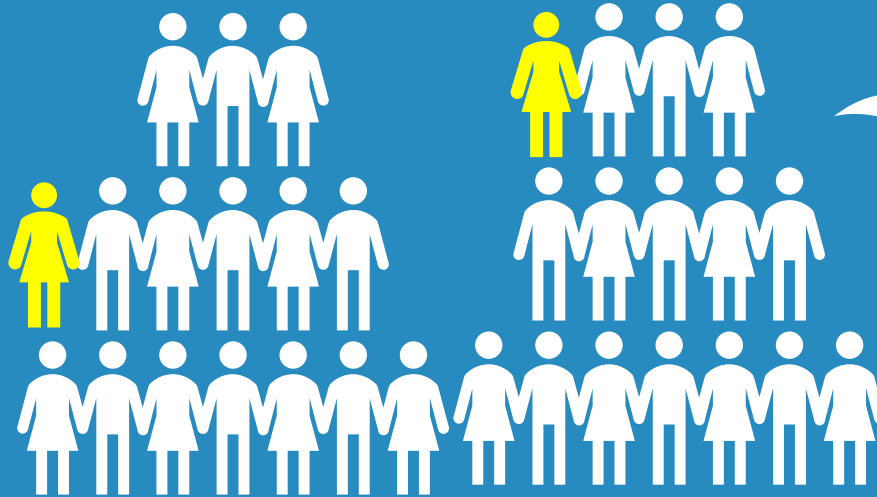


Three Rivers United Benefice

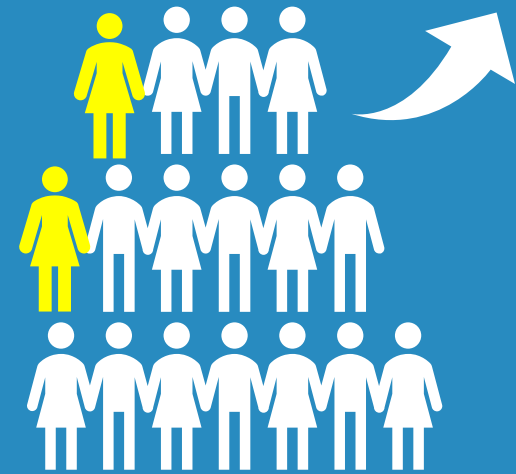


Resource Church Model of Church Planting

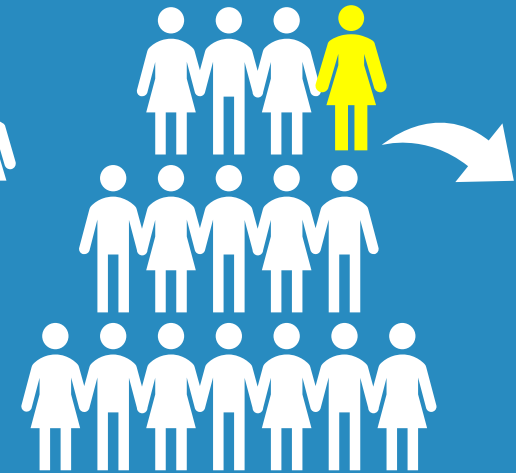
££



Three Rivers Resource Church

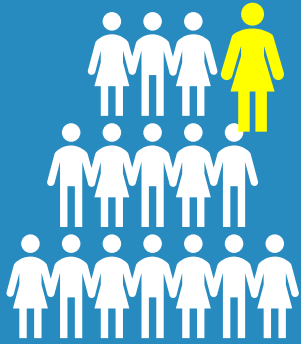


St Peter's

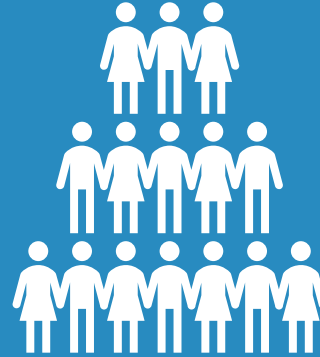


Bridge Church

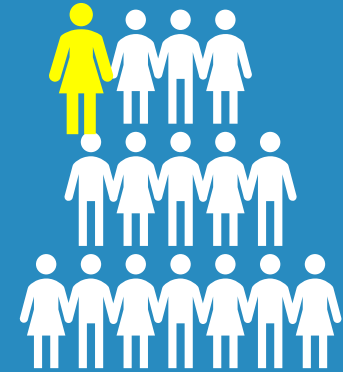
Multi-site Model of Church Planting



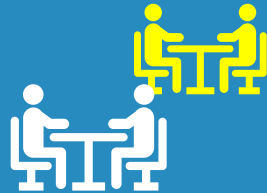
St Jude's
Three Rivers Group



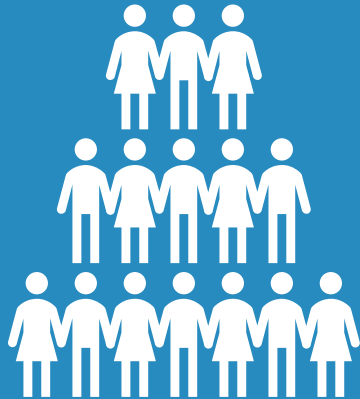
St Mary's
Three Rivers
Group



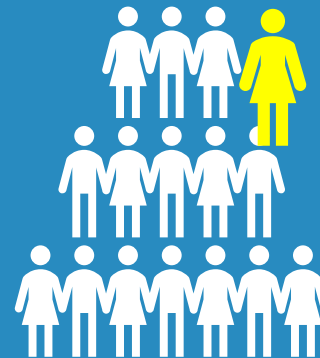
St Peter's
Three Rivers
Group



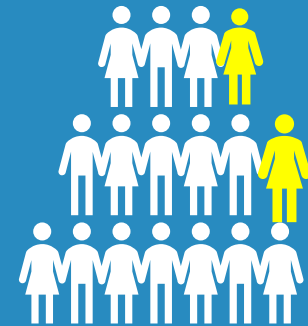
Three Rivers
Café Church



St James
Three Rivers
Group



Youth
Congregation

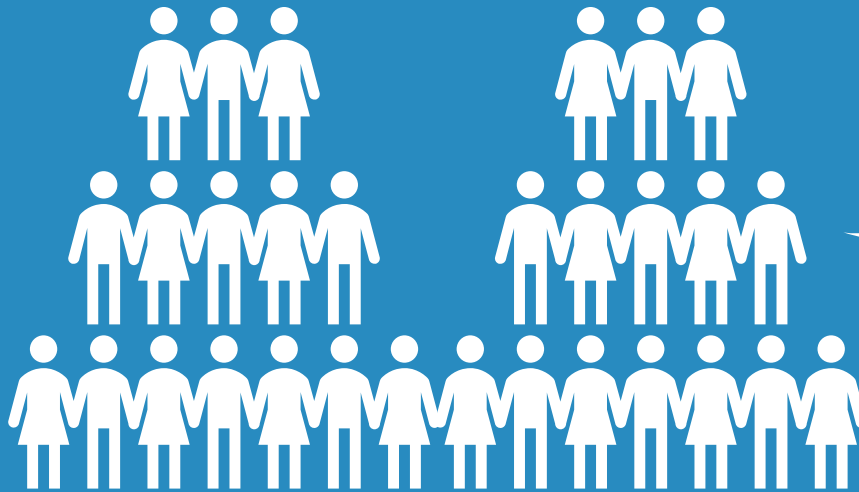
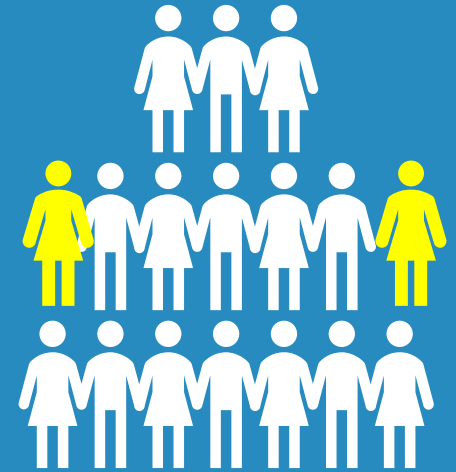


Bridge Church
Three Rivers Group

A Revitalisation Model



St Helen's



Three Rivers United Benefice



Meets every
Sunday morning

MULTIPLICATION IMPACT

2016 St Peter's plants Harbour Church Portsmouth

2020: St Matthias has plans to revitalise neighbouring parish

2017 St Peter's plants into St John's Crawley

2020: St John's Crawley developing planting plans

2017 St Peter's plants into St Matthias Fiveways, Brighton

2013 plant onto the Whitehawk estate in Brighton

2020 Harbour Church planning 2 more plants in the diocese and 1 in Wales!

2018 Harbour Church planted two churches

2014 St Peter's plants into Holy Trinity Hastings

2009 St Peter's Brighton starts

2020 St Peter's planning 6 more plants

2020: St Peter's Hasting discussing how to expand its ministry within the town

Values

1. Audacity
2. Humility
3. Generosity
4. Unity
5. Tenacity

Question

What excites you and concerns you about the different models? Which might work where you are?

Fresh expressions

1. Messy church
2. Café church
3. Forest/Green church
4. New monastic communities
5. Network churches
6. Youth congregations

Church planting

7. Traditional church planting model
8. Minster model
9. Multi-site model

Revitalisations